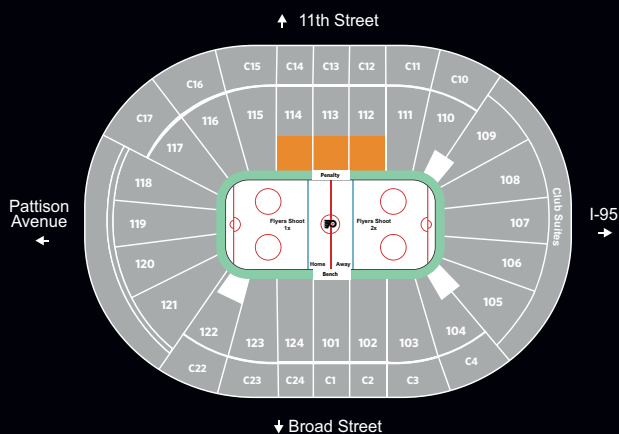
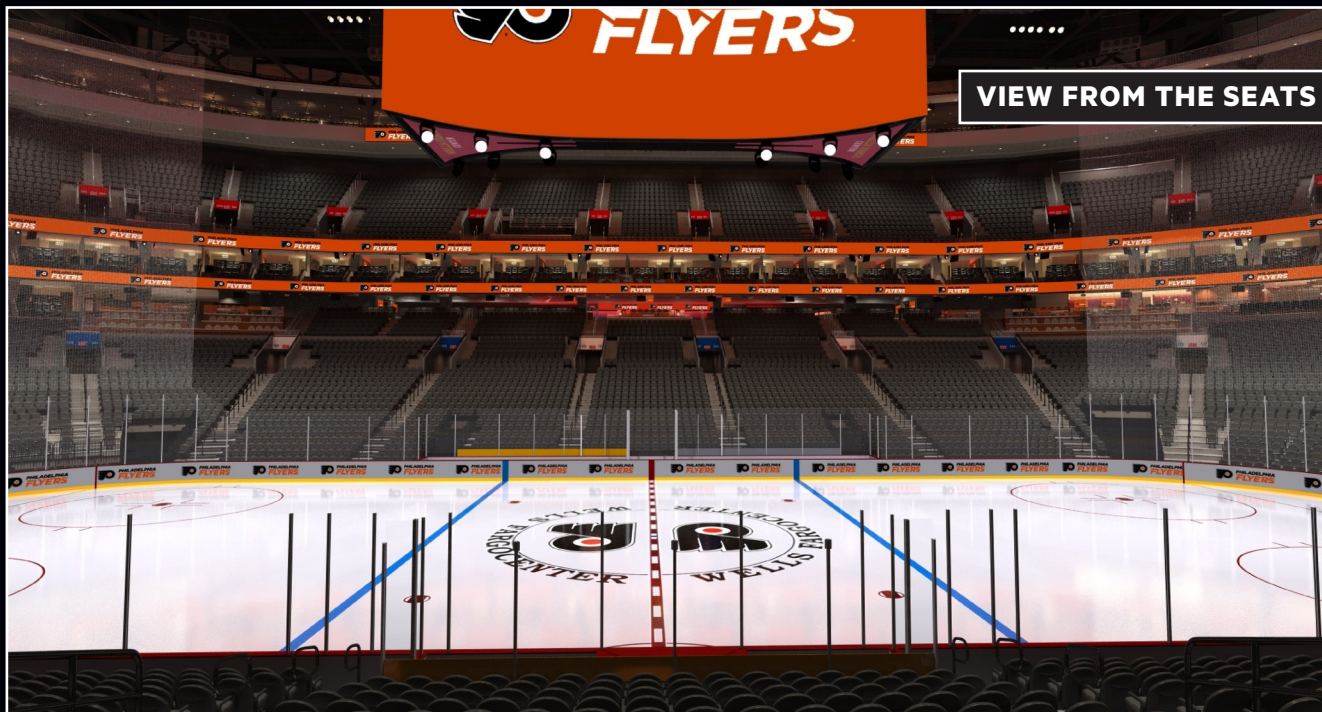


2025-26

SHIFT 4 CLUB

THE ONLY ALL-INCLUSIVE FLYERS SEASON TICKET MEMBERSHIP



2025-26 SHIFT 4 CLUB PRICING

LOCATION	FULL SEASON*	NEW HALF
ROW 1 (ICE ROW)	\$408	—
ROWS 2-10 (SECTIONS 112-114)	\$272	\$348

* One (1) complimentary parking pass per every four (4) seats on account

Full Season includes 44 Flyers home games.

New Half Season includes 25 Flyers home games.

Per game pricing shown indicates the average per game member rate.

Exact total cost to be communicated at time of purchase.

All-inclusive seating provides access to the Shift 4 Club with complimentary food & beverage (beer/wine/soft drinks) through the end of the second intermission.


Prices subject to change. All season ticket membership purchases for the 2025-26 season are final. Cancellations & refunds following purchase are not available.

2025-26


SHIFT 4 CLUB

THE ONLY ALL-INCLUSIVE FLYERS SEASON TICKET MEMBERSHIP


	FULL SEASON	NEW HALF
EVENTS		
Meet the Team	✓	—
Premium Meet the Team	✓	—
An Evening w/ Flyers Alumni	✓	—
Town Hall	✓	✓
Holiday Skate & Photo w/ Gritty	✓	—
Season Kickoff BBQ	✓	✓
Coaches Chalk Talk	✓	✓
Summer Movie Night	✓	✓
Paint the Ice	✓	—
DISCOUNTS		
Food & Beverage Discount	20%	10%
Merchandise Discount	20%	10%
Reserved Parking Discount	20%	10%
Member Preferred Pricing Discount	✓	✓
Additional Tickets at Member Rate	✓	—
GUARANTEES		
Ticket Exchange Program	Unlimited	—
Eligible for Auto Renewal	✓	—
Member Gift	✓	—
Interest-Free Payment Plan	✓	✓
Concourse Member Recognition Display	✓	—
Dedicated Service Representative	✓	✓
Flyers Single Event Suite Credit	\$500	—
EXCLUSIVE ACCESS		
Playoff Priority for Your Seats	✓	—
Inside Edge Member Rewards	✓	✓
Dedicated Lines for Concessions & Team Store	✓	✓
Inside Edge Member Lounge	✓	✓
Presale of Wells Fargo Center Events	✓	✓
Complimentary Wings Lacrosse Tickets	4	2
Complimentary Flyers Charities Carnival Tickets	2	—
Complimentary Lehigh Valley Phantoms Tickets	4	—




Shift4 Club Access




All-Inclusive Food & Beverage




Center Ice Seating




Premium Meet the Team Event




Complimentary Coat Check



VIP Entrance & Parking



Large Show Kitchen & Luxury Bars



Rotating Food & Signature Items



215.952.5226



SCAN TO LEARN MORE