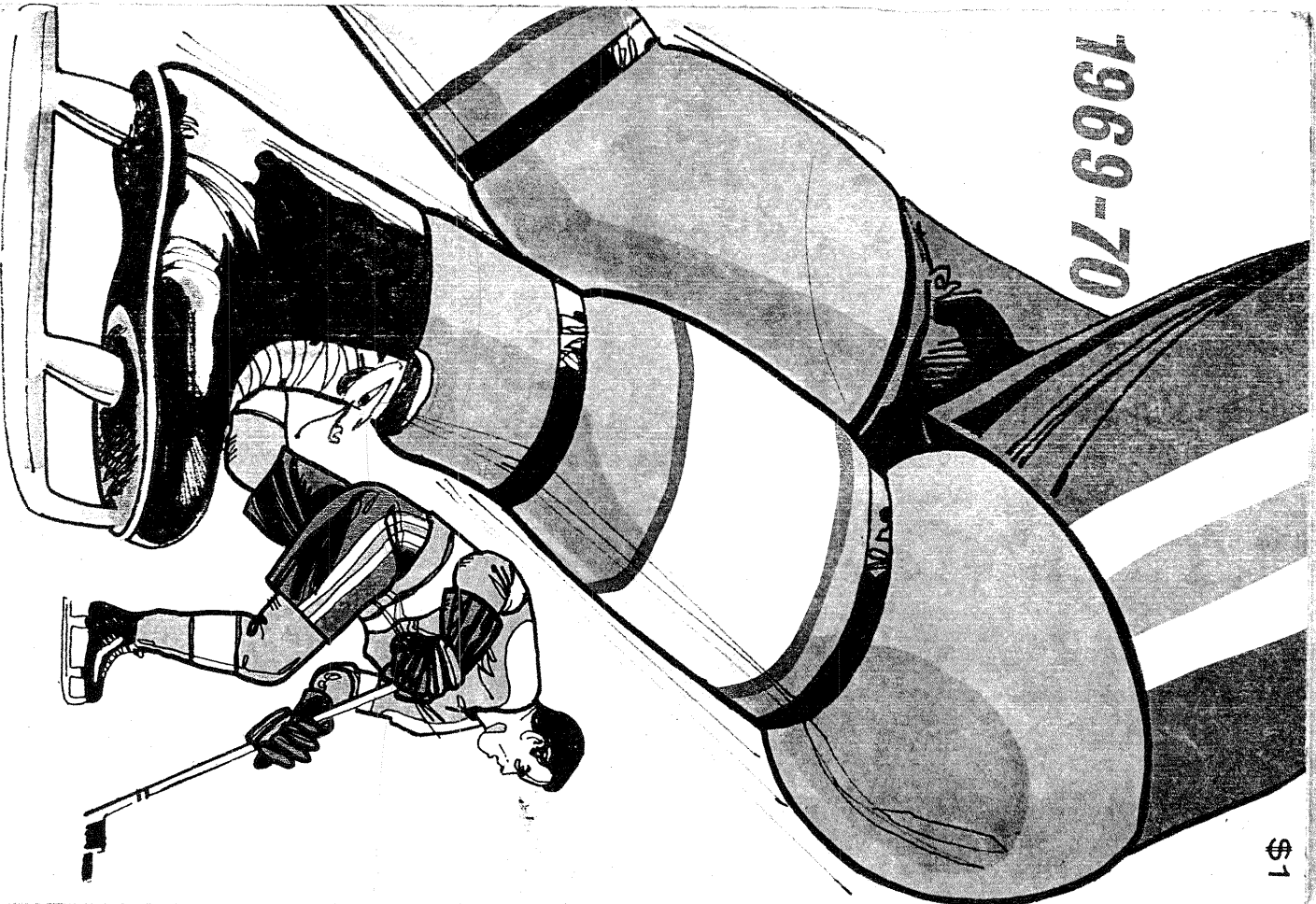


1969-70



\$1

PITTSBURGH PENGUINS

# Pittsburgh Penguins 69/70 Schedule

- Home Games
- Away Games

ABBREVIATIONS    MONT – Montreal  
 BOS – Boston      NY – New York  
 CHI – Chicago      OAK – Oakland  
 DET – Detroit      PHIL – Philadelphia  
 LA – Los Angeles    STL – St. Louis  
 MINN – Minnesota    TOR – Toronto

## OCTOBER

SUN	MON	TUES	WED	THUR	FRI	SAT
			1	2	3	4
5	6	7	8	9	10	11 OAK
12	13	14	15 PHIL	16	17	18 BOS
19 BOS	20	21 OAK	22 LA	23	24	25 MINN
26	27	28	29 NY	30	31	

## DECEMBER

SUN	MON	TUES	WED	THUR	FRI	SAT
	1	2	3 DET	4	5	6 TOR
7 TOR	8	9	10 LA	11	12 OAK	13
14 BOS	15	16	17 MONT	18	19	20 BOS
21 PHIL	22	23	24	25	26 NY	27 CHI
28	29	30	31 MONT			

## NOVEMBER

SUN	MON	TUES	WED	THUR	FRI	SAT
						1 MINN
2 DET	3	4	5 DET	6	7	8 CHI
9	10	11	12 TOR	13 STL	14	15 LA
16	17	18	19 STL	20	21	22 PHIL
23 CHI	24	25	26 MINN	27	28	29 OAK
30 PHIL						

## JANUARY

SUN	MON	TUES	WED	THUR	FRI	SAT
				1	2	3 STL
4 TOR	5	6	7 NY	8 MONT	9	10 DET
11	12	13	14 CHI	15	16	17 TOR
18 PHIL	19	20	21 OAK	22	23	24 LA
25 BOS	26	27	28 TOR	29	30	31 STL

## FEBRUARY

SUN	MON	TUES	WED	THUR	FRI	SAT
1 NY	2	3	4 MINN	5	6	7 LA
8 MINN	9	10	11 CHI	12	13	14 BOS
15 DET	16	17 PHIL	18	19 LA	20	21 OAK
22	23	24	25 MONT	26 LA	27	28 OAK

## MARCH

SUN	MON	TUES	WED	THUR	FRI	SAT
1	2	3	4 MONT	5 DET	6	7 STL
8 NY	9	10	11 OAK	12 LA	13	14 MINN
15	16	17	18 NY	19 STL	20	21 CHI
22 MONT	23	24	25 MINN	26	27	28 PHIL
29 STL	30	31				

## APRIL

SUN	MON	TUES	WED	THUR	FRI	SAT
			1 PHIL	2	3	4 STL
5 MINN	6	7	8	9	10	11
12	13	14	15	16	17	18
19	20	21	22	23	24	25
26	27	28	29	30		

# THE PITTSBURGH Penguins

1969-70

Edited by  
CRAIG KADLEC

Associate Editor  
JILL LUBIN

Published by  
HOCKEY CLUB OF PITTSBURGH

Cover Design by  
BOB GESSNER

HOCKEY CLUB OF PITTSBURGH  
National Hockey League

## PITTSBURGH PENGUINS

### Board of Directors

Donald H. Parsons  
Chairman of the Board

George B. Kilborne  
Vice Chairman of the Board

Thomas H. Wagner  
Vice Chairman of the Board

Charles F. Adams  
W. Russell G. Byers  
Gerald H. Daugherty  
Herbert M. Fisher

Horace C. Ford  
W. D. George  
H. John Heinz

James C. Holmes  
Don R. Learned  
Jack E. McGregor  
Stephen C. Miller

<i>President</i> .....	Jack E. McGregor
<i>Vice-President and General Manager</i> ..	Jack Riley
<i>Assistant General Manager</i> .....	Jack Button
<i>Treasurer</i> .....	Kent D. Bowen
<i>Coach</i> .....	Leonard "Red" Kelly
<i>Media Relations</i> .....	Craig Kadlec
<i>Director of Customer Relations</i> .....	Harry Dangerfield
<i>Director of Sales</i> .....	Marv Parliament
<i>Trainer</i> .....	Ken Carson
<i>Assistant Trainer</i> .....	Jim MacKenzie
<i>Director of Professional Scouting</i> ....	George "Red" Sullivan
<i>Chief Eastern Scout</i> .....	Edger Brenchley
<i>Chief Quebec Scout</i> .....	Dave Lucas
<i>Chief Western Scout</i> .....	Clare Rothermel
<i>Team Physician</i> .....	Dr. John Best
<i>Team Dentist</i> .....	Dr. Robert S. Gray
<i>Executive Offices</i> .....	Civic Arena
<i>Phone (Office and Rink)</i> .....	(412) 261-4010
<i>Home Ice</i> .....	Civic Arena
<i>Seating Capacity</i> .....	12,580
<i>Location of Press Box</i> .....	Upper section, first loge—center ice
<i>Dimensions of Rink</i> .....	205 feet by 85 feet
<i>Ends of Rink</i> .....	Herculite extends above boards all around rink.
<i>Nickname</i> .....	Penguins
<i>Club Colors</i> .....	Light Blue, Dark Blue and White
<i>Uniforms</i> .....	Home: Base color Light Blue, trimmed with White and Navy Blue Away: Base color White, trimmed with Light Blue and Navy Blue
<i>Club Trains At</i> .....	Brantford, Ontario, Canada
<i>Play-by-Play Broadcaster</i> .....	Bill Hamilton
<i>Radio Station</i> .....	WEEP (108 FM)

**DONALD H. PARSONS**  
Chairman of the Board



Donald H. Parsons heads the group of investors who entered the Pittsburgh professional sports scene in the spring of 1968. He and eight associates purchased controlling interest in the Penguins from the original 20-man syndicate. Eighteen of the 20 still retain a share of ownership in the Club.

Mr. Parsons has quickly and effectively plunged into his newest venture. As a member of the Board of Governors, the governing body of the National Hockey League, he has assumed an active administrative role in the business affairs of the League. He is serving on the Board's Finance Committee and the Owner-Player Council.

A dynamic, aggressive individual, Mr. Parsons is making his initial venture into the sports world. If he is as successful in hockey as he has been in law, banking and numerous undertakings, the sports fans of the Pittsburgh area will enjoy winning hockey teams for many years.

As a native of Philadelphia, Mr. Parsons attended The Haverford School outside of Philadelphia before entering Yale University where he received his Bachelor of Arts degree in 1952. He continued his higher education at the University of Michigan, earning degrees in law and business administration.

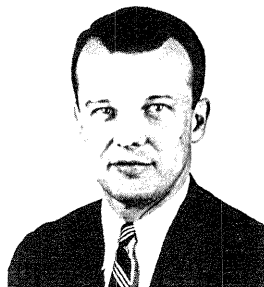
Since 1956 he has been a member of the Michigan Bar Association. He is currently the senior partner in a law firm with offices in Detroit, Birmingham, Michigan and Washington, D.C.

Mr. Parsons is Chairman of the Board of the Bank of the Commonwealth of Detroit and of the Industrial State Bank and Trust Company of Kalamazoo. He is now a Director of the Bank of Lansing and the Muskegon Bank and Trust Company and is a former Board Chairman of both banks as well as the Birmingham Bloomfield Bank. He is Chairman of the Board of Creative Capital Corporation, a licensed small business investment company, and Chairman of the Board of COMAC Company, a management consulting firm.

Mr. Parsons was the recipient of the Distinguished Service Award of the Birmingham Junior Chamber of Commerce, being named "Young Man of the Year of 1964", and is a board member of the Economic Club of Detroit. He is an honorary member of Alpha Kappa Psi business fraternity. He is also Director of the Neighborhood Service Organization and ACCORD, Inc.

A resident of Birmingham, Michigan, Mr. Parsons married the former Sarah Caswell Angell of Ann Arbor in 1954. They have three children, two sons and a daughter.

**JACK E. MCGREGOR**  
President



Two things amaze people about Jack E. McGregor, the Penguins' president. The first is how he has accomplished so much in such a short time and at such a young age (35). The second is how he finds time to do everything his hectic schedule demands.

The Penguins share Jack McGregor with the Pennsylvania Senate and numerous other interests and endeavors. He is now in his second term as a Senator, winning his initial try at public office in 1962. At age 28 he became the second youngest man in the history of the Commonwealth to be elected a member of that body. This was accomplished in spite of a great registration deficit. He was easily re-elected in 1966.

No single individual did more to bring big league hockey to Pittsburgh than Senator McGregor. A law school classmate, Peter H. Block, rekindled the senator's boyhood interest in the sport when it was learned the National Hockey League planned to expand. Between the two attorneys, they sold the NHL's Board of Governors and League President Clarence Campbell on Pittsburgh and engineered the financing of the multi-million dollar project. Through all of these involved negotiations, Senator McGregor's resourcefulness was of immeasurable help.

When the Senate is not in session, the Senator is always in his Pittsburgh office at the Civic Arena where he conducts both hockey and state business with remarkable efficiency and no conflict whatsoever. As the executive head of the hockey team, he coordinates all phases of the operation, doing more than his share of groundwork in getting new projects underway.

His honors have been many, both on a local and national level. The Pittsburgh Junior Chamber of Commerce tapped him as the "Man of the Year in Business" in 1966. In 1964 the United States Junior Chamber of Commerce selected him as one of the Outstanding Young Men in America, and two years later the Eagleton Institute of Politics at Rutgers University named him one of the 36 outstanding state legislators in the country.

A native of the Pittsburgh district, Senator McGregor attended Wilkensburg High School prior to entering Yale University where he obtained his B.S. degree. He is a graduate of the Pitt Law School where he ranked first in the class of 1962.

The Senator spent three years in the Marine Corps and received his honorable discharge as Captain in the Marine Corps Reserve.

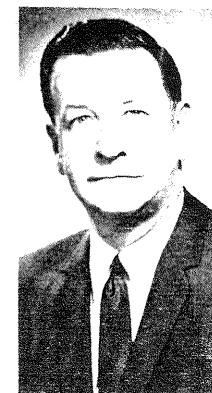
He is married to the former Carol Dangerfield of Edgewood. They have four children, three daughters and a son, and live in Edgewood.

**THOMAS H. WAGNER**  
Managing Partner

Thomas H. Wagner has had a varied and distinguished career in the world of business and industry. Presently he is the president of the COMAC Company, a Birmingham, Michigan consulting organization. He is also an officer and director of many successful Michigan enterprises.

A native of Marquette, Michigan, the 54-year old Mr. Wagner attended the University of Michigan and graduated with high honors in 1937. While at the University, he was elected to four national scholastic honorary societies in recognition of his outstanding classroom work.

The father of a son and daughter who are both active in collegiate hockey, Tim the ice version at Ithaca and Dorothy Ann on the field at Manhattan, Mr. Wagner lives with his wife, Ruth, in Bloomfield Hills, Michigan.



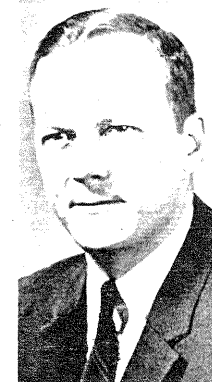
**GEORGE B. KILBORNE**  
Managing Partner

George B. Kilborne, 39 is a native of Bedford Village, New York. He was educated at the Choate and received his Bachelor of Arts degree from Yale University.

After leaving the Navy as Lieutenant J.G., he entered the textile field in New York City. In 1961 he moved to Birmingham, Michigan, and founded the Business Research Corporation which specializes in financial consulting and investment analysis. In 1967 Mr. Kilborne combined many of Business Research Corporation's operations with the COMAC Company.

As President of several companies and Chairman of two Michigan banks, Kilborne is also Director of the Central Business District Association of Detroit and a member of the Board of Governors of the National Association of Small Business Investment Companies.

Mr. Kilborne is married to the former Lucie Wheeler Peck of Palm Beach, Florida. The Kilbornes live in Birmingham and have three children.



**JACK RILEY**  
General Manager

Jack Riley, one of the top-flight executives in the National Hockey League, has now built what appears to be the winning hockey club Pittsburgh has been waiting for.

His dedicated effort in developing the Penguins into a top flight, long-term contender is now taking shape.

It has been a series of trades, drafts and plain hard work, but it should all pay off in the final standings this year.

A native of Toronto, Ontario, Riley has made all the hockey stops on the way to the NHL, including the usual jobs as player and coach.

But the 50-year old GM also served as an arena manager and came to the Penguins after a stint as President of the American Hockey League.

If experience counts, Jack Riley has it, and he will make it pay off.





**LEONARD PATRICK "RED" KELLY**  
Coach

Leonard Patrick "Red" Kelly, one of the most versatile performers in the history of the National Hockey League, was named coach of the Pittsburgh Penguins by General Manager Jack Riley on July 2nd Kelly, 42, signed a one-year contract.

Riley, in naming Kelly to the post, stated, "We and the Pittsburgh fans are fortunate in having "Red" Kelly join our organization. He has always been a big winner. We hope his winning ways will rub off on the players."

Red Kelly's NHL career began when he jumped directly from junior hockey (St. Michael's College - Toronto) to the Detroit Red Wings in 1947-48, where he performed as a defenseman for 12½ years.

In February of 1960 he was traded to the Toronto Maple Leafs and was shifted to center where he performed brilliantly in leading the Leafs to four Stanley Cup Championships.

After announcing his retirement at the conclusion of the 1966-67 season, the four-time winner of the Byng Trophy moved to Los Angeles where he led the Kings to 2nd and 4th place finishes the past two seasons.

As a player, "Red" has played on a total of eight Stanley Cup winners and nine league title winners. Only once in his 22-year career as a player and coach has he missed the playoffs, that being in 1958-59 with Detroit.

In addition to his other honors, the Simcoe, Ontario native won the James Norris Trophy in 1953-54 as the NHL's outstanding defenseman and has appeared on the all-star team eight years, six as a first team choice and twice on the second team.

Off the ice, Kelly combined his hockey career with one of a political nature for three years. From 1962 until 1965, he served as a Member of Parliament but eventually gave up his seat, when he decided he could no longer combine the rigors of the two careers to his satisfaction.

Perhaps his greatest honor is the most recent one. On June 11, "Red" was elected to the "Hockey Hall of Fame". In itself, Kelly's ultimate selection was almost guaranteed. However, his selection, under the rules of eligibility, was unanimous since he had not been retired as a player for the normally required five years. This, particularly, is a tribute to the esteem in which the hockey world holds the Penguins' new coach.

**LEONARD PATRICK "RED" KELLY**

**Pro Career Record**

Season	Club	Lea.	Regular Schedule					Playoffs				
			GP	G	A	TP	PIM	GP	G	A	TP	PIM
1947-48	Detroit	NHL	60	6	14	20	13	10	3	2	5	2
1948-49	Detroit	NHL	59	5	11	16	10	11	1	1	2	6
1949-50	Detroit	NHL	70	15	25	40	9	14	1	3	4	2
1950-51	Detroit	NHL	70	17	37	54	24	6	0	1	1	0
1951-52	Detroit	NHL	67	16	31	47	16	5	1	0	1	0
1952-53	Detroit	NHL	70	19	27	46	8	6	0	4	4	0
1953-54	Detroit	NHL	62	16	33	49	18	12	5	1	6	0
1954-55	Detroit	NHL	70	15	30	45	28	11	2	4	6	17
1955-56	Detroit	NHL	70	16	34	50	39	10	2	4	6	2
1956-57	Detroit	NHL	70	10	25	35	18	5	1	0	1	0
1957-58	Detroit	NHL	61	13	18	31	26	4	0	1	1	2
1958-59	Detroit	NHL	67	8	13	21	34	...	...	...	...	...
1959-60	Detroit	NHL	50	6	12	18	10	...	...	...	...	...
	Toronto	NHL	18	6	5	11	8	10	3	8	11	2
1960-61	Toronto	NHL	64	20	50	70	12	2	1	0	1	0
1961-62	Toronto	NHL	58	22	27	49	6	12	4	6	10	0
1962-63	Toronto	NHL	66	20	40	60	8	10	2	6	8	6
1963-64	Toronto	NHL	70	11	34	45	16	14	4	9	13	4
1964-65	Toronto	NHL	70	18	28	46	8	6	3	2	5	2
1965-66	Toronto	NHL	63	8	24	32	12	4	0	2	2	0
1966-67	Toronto	NHL	61	14	24	38	4	12	0	5	5	2
			1316	281	542	823	327	164	33	59	92	47



**DOUG BARRIE**

Defense 5'9" 175 lbs.

Born: Edmonton, Alta.  
October 2, 1946

Shoots Right

Last Amateur Club:  
Edmonton Oilers (Jrs.)

Married . . . . . no children . . . . . last year, first in National Hockey League . . . . . scored 1 goal and 1 assist in 8 games . . . . . outside interest, oil painting . . . . . works in Canada during off-season.

Season	Club	Lea	Regular Schedule					Playoffs				
			GP	G	A	TP	PIM	GP	G	A	TP	PIM
1966-67	Memphis	CPHL	11	1	5	6	14	....	....	....	....	....
	Pittsburgh	AHL	27	0	2	2	6	....	....	....	....	....
1967-68	Kansas City-Omaha-Tulsa	CPHL	63	1	14	15	171	11	1	5	6	55
1968-69	Pittsburgh	NHL	8	1	1	2	8	....	....	....	....	....
	Amarillo	CHL	66	7	29	36	163	....	....	....	....	....
NHL Totals			8	1	1	2	8	....	....	....	....	....



**ANDY BATHGATE**

Right-Wing 6' 180 lbs.

Born: Winnipeg, Man.  
August 28, 1932

Shoots Right

Last Amateur Club:  
Guelph Biltmores

Married . . . . . two children . . . . . 9th all-time goal scorer in National Hockey League . . . . . won the Hart Memorial Trophy, 1958-59 . . . . . named to All Star team twice . . . . . par golfer and always on the course in off-season.

Season	Club	Lea	Regular Schedule					Playoffs				
			GP	G	A	TP	PIM	GP	G	A	TP	PIM
1952-53	NY Rangers	NHL	18	0	1	1	6	....	....	....	....	....
	Vancouver	WHL	37	13	13	26	29	9	11	4	15	2
1953-54	Vancouver	WHL	17	12	10	22	6	....	....	....	....	....
	NY Rangers	NHL	20	2	2	4	18	....	....	....	....	....
	Cleveland	AHL	36	13	19	32	44	9	3	5	8	8
1954-55	NY Rangers	NHL	70	20	20	40	37	....	....	....	....	....
1955-56	NY Rangers	NHL	70	19	47	66	59	5	1	2	3	2
1956-57	NY Rangers	NHL	70	27	50	77	60	5	2	0	2	27
1957-58	NY Rangers	NHL	65	30	48	78	42	6	5	3	8	6
1958-59	NY Rangers	NHL	70	40	48	88	48	....	....	....	....	....
1959-60	NY Rangers	NHL	70	26	48	74	28	....	....	....	....	....
1960-61	NY Rangers	NHL	70	29	48	77	22	....	....	....	....	....
1961-62	NY Rangers	NHL	70	28	56	84	44	6	1	2	3	4
1962-63	NY Rangers	NHL	70	35	46	81	54	....	....	....	....	....
1963-64	NY Rangers	NHL	56	16	43	59	26	....	....	....	....	....
	Toronto	NHL	15	3	15	18	8	14	5	4	9	25
1964-65	Toronto	NHL	55	16	29	45	34	6	1	0	1	6
1965-66	Detroit	NHL	70	15	32	47	25	12	6	3	9	6
1966-67	Pittsburgh	AHL	6	4	6	10	7	....	....	....	....	....
	Detroit	NHL	60	8	23	31	24	....	....	....	....	....
1967-68	Pittsburgh	NHL	74	20	39	59	55	....	....	....	....	....
1968-69	Vancouver	WHL	71	37	36	73	44	8	3	5	8	5
NHL Totals			993	334	595	929	590	54	21	14	35	76



**LARRY BILLOWS**

Left-Wing 5'10" 180 lbs.

Born: Hampton, Sask.  
April 3, 1946

Shoots Left

Last Amateur Club:  
Weyburn, Sask. (Jrs.)

Single . . . . . played for Amarillo, 1968-69 . . . . .  
leading scorer there . . . . . also played in every game . . . . .  
sports enthusiast and loves fastball, swimming, pool, etc.

Season	Club	Lea	Regular Schedule					Playoffs				
			GP	G	A	TP	PIM	GP	G	A	TP	PIM
1966-67	Springfield	AHL	4	0	2	2	2	....	....	....	....	....
1966-67	Memphis	CHL	39	6	10	16	23	7	1	1	2	22
1967-68	Kansas City	CHL	44	10	20	30	54	7	1	0	1	2
1968-69	Amarillo	CHL	72	31	28	59	87	....	....	....	....	....



**LES BINKLEY**

Goaltender 6' 175 lbs.

Born: Owen Sound, Ont.  
June 6, 1936

Shoots Right

Last Amateur Club:  
Toledo Mercurys (Sr.)

Married . . . . . three children . . . . . standup goalie . . . . .  
first goalie to ever wear contact lenses while playing hockey . . . . .  
rookie year in 1967-68 with Penguins at age 32 . . . . . third  
season with Pens . . . . . recorded six shutouts in 54 games, 1967-68  
. . . . . tied him for West Division lead . . . . . started in  
pro hockey as trainer . . . . . resides in Walkerton, Ontario in  
off-season.

Season	Club	Lea	Regular Schedule				Playoffs			
			GP	GA	SO	GAPG	GP	GA	SO	GAPG
1958-59	Cleveland	AHL	1	3	0	3.00	....	....	....	....
1960-61	Cleveland	AHL	8	11	0	1.38	4	18	0	4.50
1961-62	Cleveland	AHL	60	181	5	3.02	....	....	....	....
1962-63	Cleveland	AHL	63	203	4	3.22	7	22	1	3.14
1963-64	Cleveland	AHL	65	180	3	2.77	....	....	....	....
1964-65	Cleveland	AHL	40	152	0	3.91	....	....	....	....
1965-66	Cleveland	AHL	66	192	2	2.93	12	27	1	2.33
1966-67	San Diego	WHL	53	190	1	3.56	....	....	....	....
1967-68	Pittsburgh	NHL	54	151	6	2.88	....	....	....	....
1968-69	Pittsburgh	NHL	50	158	0	3.29	....	....	....	....
NHL Totals			104	309	6	3.08	....	....	....	....



**ROBERT (BOB) BLACKBURN**

Defense 5'11" 180 lbs.

Born: Rouyn, Que.  
February 1, 1938

Shoots Left

Last Amateur Club:  
Barrie Flyers (Jrs.)

Married . . . . . three children . . . . . winner of Eddie Shore Plaque  
in American Hockey League . . . . . turned pro with Quebec in 1958-59  
season . . . . . played 11 games with New York Rangers last year . . . . .  
lives in Haileybury, Ontario in the off-season . . . . . summer activities  
include playing softball, hunting and fishing.

Season	Club	Lea	Regular Schedule					Playoffs				
			GP	G	A	TP	PIM	GP	G	A	TP	PIM
1958-59	Quebec	QHL	29	1	1	2	36	....	....	....	....	....
1959-60	Kingston	EPHL	27	0	7	7	41	....	....	....	....	....
1959-60	Providence	AHL	37	0	2	2	8	....	....	....	....	....
1960-61	Providence	AHL	50	1	5	6	53	....	....	....	....	....
1961-62	Providence	AHL	64	1	11	12	157	3	0	1	1	2
1962-63	Providence	AHL	41	2	7	9	56	6	0	0	0	4
1963-64	Providence	AHL	70	2	20	22	175	3	0	2	2	4
1964-65	Providence	AHL	67	1	17	18	162	....	....	....	....	....
1965-66	Providence	AHL	27	0	4	4	52	....	....	....	....	....
	Vancouver	WHL	28	1	5	6	44	7	0	0	0	12
1966-67	Vancouver	WHL	69	2	11	13	120	8	0	4	4	16
1967-68	Buffalo	AHL	69	2	15	17	116	5	1	1	2	14
1968-69	New York	NHL	11	0	0	0	0	....	....	....	....	....
	Buffalo	AHL	58	3	15	18	73	6	0	1	1	14
	<b>NHL Totals</b>		<b>11</b>	<b>0</b>	<b>0</b>	<b>0</b>	<b>0</b>	<b>....</b>	<b>....</b>	<b>....</b>	<b>....</b>	<b>....</b>



**JOHN (BUDDY) BLOM**

Goaltender 5'10" 165 lbs.

Born: Stratford, Ont.  
September 16, 1942

Shoots Right

Last Amateur Club:  
University of Denver

Single . . . . . graduate student . . . . . working toward Master's Degree  
. . . . . played for Amarillo, 1968-69 . . . . . won most  
valuable player at University of Denver . . . . . sports enthusiast.

Season	Club	Lea	Regular Schedule				Playoffs			
			GP	GA	SO	GAPG	GP	GA	SO	GAPG
1966-67	Memphis	CHL	4-2/3	18	1	3.86	....	....	....	....
1967-68	San Diego	WHL	2/3	4	0	4.90	....	....	....	....
1967-68	Fort Worth	CPHL	28-1/3	85	1	3.05	13	37	*1	2.85
1968-69	Amarillo	CHL	38	134	0	3.78	....	....	....	....





**WALLY BOYER**

Center 5'8" 165 lbs.

Born: Cowan, Man.  
September 27, 1937

Shoots Left

Last Amateur Club:  
Toronto Marlboros (Jrs.)

Married . . . . . two children . . . . . played for Penguins in 1968-69 season . . . . . hustler . . . . . center ice play maker . . . . . played for Black Hawks in 1966-67 . . . . . credits Jack Riley with helping him the most in his hockey career.



**MICHEL (MIKE) BRIERE**

Center 5'10" 165 lbs.

Born: Malarctic, Quebec  
October 21, 1949

Shoots Left

Last Amateur Club:  
Shawinigan Falls

Single . . . . . 20-years old . . . . . first season as a pro . . . . . scored 75 goals at Shawinigan Falls last season . . . . . could be Penguin "Super Star" . . . . . plays tournament golf and tennis.

*Michel Briere*

Season	Club	Lea	Regular Schedule					Playoffs				
			GP	G	A	TP	PIM	GP	G	A	TP	PIM
1958-59	Ch-Royals	QHL	28	3	7	10	8	4	0	0	0	0
	N. W'minster	WHL	27	5	5	10	0	....	....	....	....	....
	Hershey	AHL	4	0	1	1	2	....	....	....	....	....
1959-60	Sudbury	EPHL	70	23	42	65	36	11	2	4	6	4
1960-61	Rochester	AHL	70	24	33	57	31	....	....	....	....	....
1961-62	Rochester	AHL	67	20	21	41	67	2	0	0	0	0
1962-63	Springfield	AHL	66	28	45	73	59	....	....	....	....	....
1963-64	Rochester	AHL	52	20	19	39	35	2	1	0	1	2
1964-65	Rochester	AHL	70	20	41	61	28	10	2	4	6	4
1965-66	Rochester	AHL	19	3	10	13	13	....	....	....	....	....
	Toronto	NHL	46	4	17	21	23	4	0	1	1	0
1966-67	Portland	WHL	17	7	6	13	10	....	....	....	....	....
	Chicago	NHL	42	5	6	11	15	1	0	0	0	0
1967-68	Oakland	NHL	74	13	20	33	44	....	....	....	....	....
1968-69	Pittsburgh	NHL	62	10	19	29	17	....	....	....	....	....
NHL Totals			224	32	62	94	99	5	0	1	1	0



**CRAIG CAMERON**

Right-Wing 6' 195 lbs.

Born: Edmonton, Alta.  
July 19, 1945

Shoots Right

Last Amateur Club:  
Edmonton Oil Kings (Jrs.)

Single . . . . . acquired in a trade with St. Louis in off-season . . .  
scored 11 goals for the Blues . . . . . turned pro in 1966-67 with  
Detroit and sent to Memphis of Central Hockey League . . . . .  
noted as a tough and aggressive checker . . . . . spends summers  
in Western Canada.

Season	Club	Lea	Regular Schedule					Playoffs				
			GP	G	A	TP	PIM	GP	G	A	TP	PIM
1966-67	Memphis	CPHL	1	0	0	0	2	....	....	....	....	....
	Detroit	NHL	1	0	0	0	0	....	....	....	....	....
1967-68	Pittsburgh	AHL	50	9	11	20	12	....	....	....	....	....
	St. Louis	NHL	32	7	2	9	8	14	1	0	1	11
1968-69	Kan. City	CPHL	32	12	12	24	27	....	....	....	....	....
	St. Louis	NHL	72	11	5	16	40	2	0	0	0	0
NHL Totals			105	18	7	25	48	16	1	0	1	11



**JOE DALEY**

Goaltender 5'10" 165 lbs.

Born: Winnipeg, Man.  
February 20, 1943

Shoots Left

Last Amateur Club:  
Johnstown (EHL)

Married . . . . . two children . . . . . turned pro with Detroit organization in  
1961-62 season . . . . . played 29 games with Penguins last year and  
recorded two shutouts . . . spends his summers in his native Winnipeg. . .  
plays baseball and golf.

Season	Club	Lea	Regular Schedule				Playoffs			
			GP	GA	SO	GAPG	GP	GA	SO	GAPG
1961-62	Sudbury	EPHL	1	6	0	6.00	....	....	....	....
1962-63	Cincinnati	CPHL	1	3	0	3.00	....	....	....	....
1963-64	Pittsburgh	AHL	2	7	0	3.50	2	6	0	3.00
1965-66	Memphis	CPHL	67	202	2	3.15	....	....	....	....
	San Francisco	WHL	7	17	2	2.43	....	....	....	....
1966-67	Pittsburgh	AHL	16	43	0	2.72	....	....	....	....
	Memphis	CPHL	49	169	0	3.34	7	27	0	3.86
1967-68	Baltimore	AHL	55	192	2	3.49	....	....	....	....
1968-69	Pittsburgh	NHL	29	87	2	3.23	....	....	....	....
NHL Totals			29	87	2	3.23	....	....	....	....



### VAL FONTEYNE

Left-Wing 5'9" 155 lbs.

Born: Wetaskiwin, Alta.  
December 2, 1933

Shoots Left

Last Amateur Club:  
Medicine Hats (Jrs.)

Married . . . . . two children . . . . . lives in native Wetaskiwin during off-season . . . . . veteran of National Hockey League . . . . . has played 8 full seasons in the big leagues . . . . . hustling, speed and persistent checking are his marks . . . . . invaluable penalty killer . . . . . noted for very few penalty minutes.

Season	Club	Lea	Regular Schedule					Playoffs				
			GP	G	A	TP	PIM	GP	G	A	TP	PIM
1954-55	N. W'minster	WHL	7	0	1	1	0	.....	.....	.....	.....	.....
1955-56	Seattle	WHL	70	18	18	36	0	.....	.....	.....	.....	.....
1956-57	Seattle	WHL	70	24	40	64	6	6	5	1	6	2
1957-58	Seattle	WHL	70	34	41	75	11	9	4	4	8	0
1958-59	Seattle	WHL	64	32	49	81	2	12	6	5	11	0
1959-60	Detroit	NHL	69	4	7	11	2	6	0	4	4	0
1960-61	Detroit	NHL	66	6	11	17	4	11	2	3	5	0
1961-62	Detroit	NHL	70	5	5	10	4	.....	.....	.....	.....	.....
1962-63	Detroit	NHL	67	6	14	20	2	11	0	0	0	0
1963-64	New York	NHL	69	7	18	25	4	.....	.....	.....	.....	.....
1964-65	Baltimore	AHL	9	2	3	5	2	.....	.....	.....	.....	.....
	New York	NHL	27	0	1	1	2	.....	.....	.....	.....	.....
1965-66	Pittsburgh	AHL	12	5	7	12	6	.....	.....	.....	.....	.....
	Detroit	NHL	59	5	10	15	0	12	1	0	1	4
1966-67	Pittsburgh	AHL	17	5	11	16	0	9	3	5	8	4
	Detroit	NHL	28	1	1	2	0	.....	.....	.....	.....	.....
1967-68	Pittsburgh	NHL	69	6	28	34	0	.....	.....	.....	.....	.....
1968-69	Pittsburgh	NHL	74	12	17	29	2	.....	.....	.....	.....	.....
	NHL Totals		614	54	117	171	24	45	3	8	11	4



### NICK HARBARUK

Right-Wing 6' 190 lbs.

Born: Poland  
August 16, 1943

Shoots Right

Last Amateur Club:  
Toronto Marlboros (Jrs.)

Married . . . . . one child . . . . . one of the very few European born players in the National Hockey League . . . . . hard-skating, durable right-winger . . . . . played most of pro hockey with Tulsa of Central Hockey League . . . . . has never missed a game in pro hockey due to illness or injuries . . . . . graduate of Tulsa University . . . . . scored 108 goals in five years in minors . . . . . makes home in Toronto during off-season.

Season	Club	Lea	Regular Schedule					Playoffs				
			GP	G	A	TP	PIM	GP	G	A	TP	PIM
1961-62	Pittsburgh	AHL	1	0	0	0	0	.....	.....	.....	.....	.....
1962-64	Out of Professional Hockey.											
1964-65	Rochester	AHL	2	0	0	0	0	.....	.....	.....	.....	.....
	Tulsa	CPHL	67	27	43	70	65	12	5	8	13	25
1965-66	Tulsa	CPHL	70	20	46	66	97	11	1	4	5	10
1966-67	Tulsa	CPHL	70	14	26	40	84	.....	.....	.....	.....	.....
1967-68	Tulsa	CPHL	54	20	30	50	96	11	1	6	7	14
1968-69	Vancouver	WHL	3	1	1	2	2	.....	.....	.....	.....	.....
	Tulsa	CPHL	69	26	19	45	89	7	2	5	7	18



**BRYAN HEXTALL**

Center 5'11" 180 lbs.

Born: Winnipeg, Man.

May 23, 1941

Shoots Left

Last Amateur Club:

Brandon Wheat Kings (Jrs.)

Married . . . . . three children . . . . . played on championship teams in Rochester and Vancouver . . . . . won most popular player award in Rochester, 1967-68 season . . . . . father elected to National Hockey Hall of Fame this year . . . . . brother Dennis plays for Los Angeles Kings . . . . . works as a carpenter in the off-season . . . . . likes fishing and boating.

Season	Club	Lea	Regular Schedule					Playoffs				
			GP	G	A	TP	PIM	GP	G	A	TP	PIM
1961-62	Kitch.-Waterloo	EPHL	56	22	23	45	48	7	1	0	1	0
1962-63	NY Rangers	NHL	21	0	2	2	10	.....	.....	.....	.....	.....
	Baltimore	AHL	50	8	14	22	26	.....	.....	.....	.....	.....
1963-64	Baltimore	AHL	54	10	12	22	39	.....	.....	.....	.....	.....
1964-65	Baltimore	AHL	71	13	30	43	46	5	0	2	2	6
1965-66	Vancouver	WHL	41	8	20	28	37	7	3	1	4	23
1966-67	Vancouver	WHL	61	14	42	56	60	8	3	5	8	11
1967-68	Rochester	AHL	72	24	47	71	134	11	4	10	14	13
1968-69	Vancouver	WHL	70	22	56	78	104	8	4	7	11	22
NHL Totals			21	0	2	2	10	.....	.....	.....	.....	.....



**WAYNE HICKS**

Right-Wing 5'11" 190 lbs.

Born: Aberdeen, Wash.

April 9, 1937

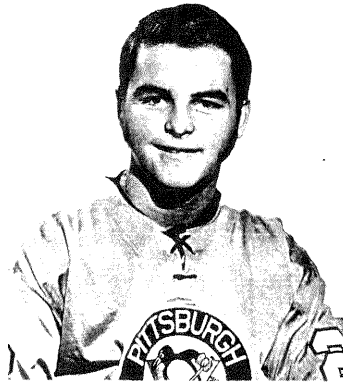
Shoots Right

Last Amateur Club:

Melville Millionaires (Jrs.)

Married . . . . . three children . . . . . one of few native Americans in National Hockey League . . . . . lives in Calgary, Alberta . . . . . all-star honors in the American Hockey League . . . . . four straight 30-goal campaigns while playing for Quebec . . . . . traded to Penguins from Philadelphia for Art Stratton in 1967-68 . . . . . has played for five NHL teams but has never completed a full season.

Season	Club	Lea	Regular Schedule					Playoffs				
			GP	G	A	TP	PIM	GP	G	A	TP	PIM
1956-57	Calgary	WHL	4	0	0	0	0	.....	.....	.....	.....	.....
1957-58	Calgary	WHL	60	7	14	21	19	14	0	1	1	6
1958-59	Calgary	WHL	64	15	20	35	41	8	1	2	3	5
1959-60	S. Ste. Marie	EPHL	69	30	47	77	64	.....	.....	.....	.....	.....
	Chicago	NHL	.....	.....	.....	.....	.....	1	1	0	0	1
1960-61	Buffalo	AHL	72	20	35	55	57	4	2	2	4	6
	Chicago	NHL	1	0	0	0	0	1	0	0	0	2
1961-62	Buffalo	AHL	70	22	42	64	74	11	3	3	6	8
1962-63	Boston	NHL	65	7	9	16	14	.....	.....	.....	.....	.....
1963-64	Montreal	NHL	2	0	0	0	0	.....	.....	.....	.....	.....
	Quebec	AHL	70	36	42	78	30	9	4	2	6	12
1964-65	Quebec	AHL	72	38	47	85	52	5	1	0	1	2
1965-66	Quebec	AHL	72	32	49	81	24	6	0	0	0	0
1966-67	Quebec	AHL	72	31	60	91	34	5	1	2	3	2
1967-68	Quebec	AHL	13	4	9	13	13	.....	.....	.....	.....	.....
	Philadelphia	NHL	32	2	7	9	6	.....	.....	.....	.....	.....
	Pittsburgh	NHL	15	13	23	36	22	.....	.....	.....	.....	.....
1968-69	Baltimore	AHL	65	33	36	69	55	.....	.....	.....	.....	.....
NHL Totals			115	13	23	36	22	2	0	1	1	2



**RICK KESSELL**

Center 5'10" 175 lbs.

Born: Toronto, Ont.  
July 27, 1949

Shoots Left

Last Amateur Club:  
Oshawa Generals (Jrs.)

Single ..... Penguins' #1 Draft Choice ..... recorded 92 points in OHA Junior League while playing for Oshawa ..... chosen most valuable player ..... rated as a good, strong skater with an accurate shot ..... likes baseball, golf and water skiing..... lives in Toronto in off-season.

Season	Club	Lea	GP	G	A	TP	PIM
1968-69	Oshawa	OHA	53	26	66	92	8



**JEAN GUY LAGACE**

Defense 5'8" 175 lbs.

Born: L'Abord-A-Plouffe, Que.  
February 5, 1945

Shoots Right

Last Amateur Club:  
Muskegon (IHL)

Turned pro with Pittsburgh in 1968-69 season ..... voted most valuable player and most popular player with Muskegon of International Hockey League ..... a rough, tough, hard-hitting defenseman ..... split last season between Amarillo and Pittsburgh ..... avid sportsman, golf, tennis, softball, camping and swimming.

Season	Club	Lea	Regular Season					Playoffs				
			GP	G	A	TP	PIM	GP	G	A	TP	PIM
1968-69	Amarillo	CHL	49	9	19	28	26	.....	.....	.....	.....	.....
	Pittsburgh	NHL	17	0	1	1	14	.....	.....	.....	.....	.....
	NHL Totals		17	0	1	1	14	.....	.....	.....	.....	.....



**EDWARD (TED) LANYON**

Defense 5'11" 180 lbs.

Born: Winnipeg, Man.  
June 11, 1939

Shoots Left

Last Amateur Club:  
Greensboro Generals

Married . . . . . one child . . . . . turned pro with Cleveland in 1963-64 season . . . . . played most of last year with the Wranglers . . . scored six goals and picked up 26 assists . . . . . is a good playmaker and a steady performer . . . . . he is a native of Winnipeg, Manitoba.

Season	Club	Lea	Regular Schedule					Playoffs				
			GP	G	A	TP	PIM	GP	G	A	TP	PIM
1963-64	Cleveland	AHL	1	0	0	0	2	....	....	....	....	....
1964-65	Omaha	CPHL	2	0	0	0	0	....	....	....	....	....
	Cleveland	AHL	70	9	13	22	37	....	....	....	....	....
1965-66	Cleveland	AHL	64	5	10	15	55	12	0	5	5	4
1966-67	Buffalo	AHL	69	9	13	22	10	....	....	....	....	....
1967-68	Baltimore	AHL	34	1	9	10	22	....	....	....	....	....
	Pittsburgh	NHL	5	0	0	0	4	....	....	....	....	....
1968-69	Amarillo	CHL	58	6	26	32	168	....	....	....	....	....
NHL Totals			5	0	0	0	4	....	....	....	....	....



**KEITH McCREARY**

Left-Wing 5'10" 175 lbs.

Born: Sundridge, Ont.  
June 19, 1940

Shoots Left

Last Amateur Club:  
Hull-Ottawa Canadiens (Jrs.)

Married . . . . . two children . . . . . scored 25 goals with Penguins last season . . . . . this is his third year with Pittsburgh . . . . . rated as an accurate shooter who makes his own opportunities . . . . . turned pro in 1959-60 with Montreal organization . . . . . brother, Bill, plays for St. Louis Blues . . . . . he and his family live in Bolton, Ontario in off-season.

Season	Club	Lea	Regular Schedule					Playoffs				
			GP	G	A	TP	PIM	GP	G	A	TP	PIM
1959-60	Hull-Ottawa	EPHL	5	0	0	0	0	....	....	....	....	....
1960-61	Hull-Ottawa	EPHL	61	19	21	40	35	14	4	2	6	15
1961-62	Hull-Ottawa	EPHL	64	30	36	66	48	12	5	8	13	2
	Montreal	NHL	....	....	....	....	....	1	0	0	0	0
1962-63	Hull-Ottawa	EPHL	69	27	34	61	44	3	1	1	2	0
1963-64	Hershey	AHL	66	25	19	44	21	6	2	4	6	2
1964-65	Hershey	AHL	46	16	18	34	36	14	0	7	7	24
	Montreal	NHL	9	0	3	3	4	....	....	....	....	....
1965-66	Cleveland	AHL	66	18	24	42	42	12	5	4	9	8
1966-67	Cleveland	AHL	70	28	29	57	50	5	1	2	3	0
1967-68	Pittsburgh	NHL	70	14	12	26	44	....	....	....	....	....
1968-69	Pittsburgh	NHL	70	25	23	48	42	....	....	....	....	....
NHL Totals			149	39	38	77	90	1	0	0	0	0



**JIM MORRISON**

Defense 5'10" 183 lbs.

Born: Montreal, Que.  
October 11, 1931

Shoots Left

Last Amateur Club:  
Barrie Flyers (Jrs.)

Married . . . . . a veteran of 10 years in the NHL . . . . . played with Boston, Toronto, Detroit and New York . . . . . has played more than 575 games in NHL . . . . . turned pro in the 1951-52 season . . . . . Jim is a smooth skater and is a good point man on the power plays . . . . . spent last 10 years in AHL and is looking forward to another crack at NHL action . . . . . is a par golfer and a teaching pro in the off-season.

Season	Club	Lea	Regular Schedule					Playoffs				
			GP	G	A	TP	PIM	GP	G	A	TP	PIM
1951-52	Hershey-Pitts	AHL	39	8	25	33	18	....	....	....	....	....
	Boston	NHL	14	0	2	2	2	....	....	....	....	....
	Toronto	NHL	17	0	1	1	4	2	0	0	0	0
1952-53	Toronto	NHL	56	1	8	9	36	....	....	....	....	....
1953-54	Toronto	NHL	60	9	11	20	51	5	0	0	0	4
1954-55	Toronto	NHL	70	5	12	17	84	4	0	1	1	4
1955-56	Toronto	NHL	63	2	17	19	77	5	0	0	0	4
1956-57	Toronto	NHL	63	3	17	20	44	....	....	....	....	....
1957-58	Toronto	NHL	70	3	21	24	62	....	....	....	....	....
1958-59	Boston	NHL	70	8	17	25	42	6	0	6	6	16
1959-60	Detroit	NHL	70	3	23	26	62	6	0	2	2	0
1960-61	NY Rangers	NHL	19	1	6	7	6	....	....	....	....	....
	Quebec	AHL	45	9	24	33	61	....	....	....	....	....
1961-62	Quebec	AHL	68	8	28	36	55	....	....	....	....	....
1962-63	Quebec	AHL	51	5	22	27	26	....	....	....	....	....
1963-64	Quebec	AHL	69	11	28	39	42	9	1	0	1	0
1964-65	Quebec	AHL	52	6	21	27	66	4	0	0	0	0
1965-66	Quebec	AHL	71	11	48	59	78	6	2	3	5	8
1966-67	Quebec	AHL	70	5	45	50	37	5	1	4	5	12
1967-68	Quebec	AHL	58	4	35	39	30	15	4	12	16	14
1968-69	Baltimore	AHL	65	5	32	37	35	4	2	1	3	10
<b>NHL Totals</b>			<b>572</b>	<b>35</b>	<b>135</b>	<b>170</b>	<b>470</b>	<b>28</b>	<b>0</b>	<b>9</b>	<b>9</b>	<b>28</b>



**TRACY PRATT**

Defense 6'2" 195 lbs.

Born: New York City, N.Y.  
March 8, 1943

Shoots Left

Last Amateur Club:  
Brandon (Jrs.)

Married . . . . . one child . . . . . one of the few American born NHL players . . . . . obtained from Vancouver of WHL last year. . . . . previous NHL experience with Oakland Seals . . . . . father "Babe" Pratt was a star with New York and Toronto . . . . . Tracy is a rough, tough, hard hitting type player . . . . . played Junior Hockey in Western Canada and turned pro with St. Paul in 1964-65 season . . . . . plays golf and baseball in the off-season.

Season	Club	Lea	Regular Schedule					Playoffs				
			GP	G	A	TP	PIM	GP	G	A	TP	PIM
1963-64	St. Paul	CPHL	52	4	15	19	128	11	0	0	0	49
1964-65	St. Paul	CPHL	66	15	25	40	200	9	1	2	3	27
1965-66	St. Louis	CPHL	70	2	23	25	206	5	1	2	3	6
1966-67	Portland	WHL	63	0	10	10	92	4	0	1	1	4
1967-68	Vancouver	WHL	29	1	8	9	73	....	....	....	....	....
	Oakland	NHL	34	0	5	5	90	....	....	....	....	....
1968-69	Vancouver	WHL	45	2	10	12	74	....	....	....	....	....
	Pittsburgh	NHL	18	0	5	5	34	....	....	....	....	....
<b>NHL Totals</b>			<b>52</b>	<b>0</b>	<b>10</b>	<b>10</b>	<b>124</b>	<b>....</b>	<b>....</b>	<b>....</b>	<b>....</b>	<b>....</b>



**DEAN PRENTICE**

Left-Wing 5'11" 180 lbs.

Born: Schumacher, Ont.  
October 5, 1932

Shoots Left

Last Amateur Club:  
Guelph Biltmores (Jrs.)

*Dean Prentice*

Married . . . . two children . . . . . turned pro with New York in the 1952-53 season . . . . . has played 17 seasons in NHL with New York, Boston and Detroit . . . . . is just 4 goals short of the magic 300 goal circle . . . . . drafted from Detroit in the summer draft . . . . . is a slick, smooth skating forward . . . . . two brothers Eric and Boyd played in AHL . . . . . Dean is a director of two hockey schools and makes his summer home in Guelph, Ontario.

Season	Club	Lea	Regular Schedule					Playoffs				
			GP	G	A	P	PM	GP	G	A	P	PM
1952-53	New York	NHL	55	6	3	9	20	....	....	....	....	....
1953-54	New York	NHL	52	4	13	17	18	....	....	....	....	....
1954-55	New York	NHL	70	16	15	31	20	....	....	....	....	....
1955-56	New York	NHL	70	24	18	42	44	5	1	0	1	2
1956-57	New York	NHL	68	19	23	42	38	5	0	2	2	4
1957-58	New York	NHL	38	13	9	22	14	6	1	3	4	4
1958-59	New York	NHL	70	17	33	50	11	....	....	....	....	....
1959-60	New York	NHL	70	32	34	66	43	....	....	....	....	....
1960-61	New York	NHL	56	20	25	45	17	....	....	....	....	....
1961-62	New York	NHL	68	22	38	60	20	3	0	2	2	0
1962-63	New York	NHL	49	13	25	38	18	....	....	....	....	....
	Boston	NHL	19	6	9	15	4	....	....	....	....	....
1963-64	Boston	NHL	70	23	16	39	37	....	....	....	....	....
1964-65	Boston	NHL	31	14	9	23	12	....	....	....	....	....
1965-66	Boston	NHL	50	7	22	29	10	....	....	....	....	....
	Detroit	NHL	19	6	9	15	8	12	5	5	10	4
1966-67	Detroit	NHL	68	23	22	45	18	....	....	....	....	....
1967-68	Detroit	NHL	69	17	38	55	42	....	....	....	....	....
1968-69	Detroit	NHL	74	14	20	34	18	....	....	....	....	....
NHL Totals			1066	296	381	677	412	31	7	12	19	14



**JEAN PRONOVOST**

Right-Wing 5'11" 180 lbs.

Born: Shawinigan Falls, Que.  
December 18, 1945

Shoots Right

Last Amateur Club:  
Niagara Falls, Ont. (Jrs.)

Married . . . . one child . . . starting second year with the Penguins . . . . . turned pro with Boston owned Oklahoma City Blazers in 1966-67 season . . . . . scored 16 goals with Pens last year . . . . . brother, Marcel was a star defenseman with Toronto and Detroit . . . . . now coach of Tulsa Oilers of CHL . . . . . Jean is highly rated in hockey circles and is known as an "Honest Player" . . . . . he gives out 110% every time out . . . . . his summer activities include fastball and swimming.

Season	Club	Lea	Regular Schedule					Playoffs				
			GP	G	A	TP	PIM	GP	G	A	TP	PIM
1966-67	Oklahoma City	CPHL	68	21	24	45	81	11	5	2	7	12
1967-68	Oklahoma City	CPHL	49	25	25	50	41	7	3	4	7	6
1968-69	Pittsburgh	NHL	76	16	25	41	41	....	....	....	....	....
NHL Totals			76	16	25	41	41	....	....	....	....	....







**GLENN SATHER**

Left-Wing 5'11" 180 lbs.

Born: High River, Alta.  
September 2, 1943

Shoots Left

Last Amateur Club:  
Edmonton Alberta Oil Kings (Jrs.)

Married . . . . . drafted from Boston Bruins . . . . . turned pro with Detroit organization in 1964-65 season . . . . . team mate of Jean Pronovost in Oklahoma City . . . played two seasons in Boston. . . he is a good solid skater and likes the rough going . . . . . was a member of two CHL championship teams and one Memorial Cup winner . . . . Glen operates a hockey school in the summer . . . . . he is also a mountain climber, and likes glacier skiing and alpine skiing. . if he has time he plays tennis and baseball.

Season	Club	Regular Schedule					Playoffs					
		Lea	GP	G	A	TP	PIM	GP	G	A	TP	PIM
1964-65	Memphis	CPHL	69	19	29	48	98	.....	.....	.....	.....	.....
1965-66	Okla. City	CPHL	64	13	12	25	76	.....	.....	.....	.....	.....
1966-67	Boston	NHL	5	0	0	0	0	.....	.....	.....	.....	.....
1966-67	Okla. City	CPHL	57	14	19	33	147	11	2	6	8	24
1967-68	Boston	NHL	65	8	12	20	34	3	.....	.....	.....	.....
1968-69	Boston	NHL	76	4	11	15	67	10	0	0	0	18
<b>NHL Totals</b>			<b>146</b>	<b>12</b>	<b>23</b>	<b>35</b>	<b>101</b>	<b>13</b>	<b>0</b>	<b>0</b>	<b>0</b>	<b>18</b>



**KEN SCHINKEL**

Right-Wing 5'10" 170 lbs.

Born: Jansen, Sask.  
November 27, 1932

Shoots Right

Last Amateur Club:  
St. Catherine (Jrs.)

Married . . . . . three children . . . . a veteran of 16 years in professional hockey . . . turned professional in the 1953-54 season with Springfield of the AHL . . . was the teams leading point-getter last season . . . . . he is solid checker and described as a "Complete Hockey Player". . . . . he has been Pittsburgh's contribution to the NHL's All Star team for the past two seasons . . . . he underwent knee surgery in the off-season, but reported to camp in excellent condition . . . . he and his family live in Fonthill, Ontario in the off-season.

Season	Club	Lea	Regular Schedule				Playoffs					
			GP	G	A	TP	PIM	GP	G	A	TP	PIM
1953-54	Springfield	QHL	39	3	14	17	6	.....	.....	.....	.....	.....
	Syracuse	AHL	28	7	14	21	4	.....	.....	.....	.....	.....
1954-55	Out of Prof. Hockey							.....	.....	.....	.....	.....
1955-56	Springfield	AHL	57	18	16	34	42	.....	.....	.....	.....	.....
1956-57	Springfield	AHL	64	22	36	58	2	.....	.....	.....	.....	.....
1957-58	Springfield	AHL	70	11	27	38	40	13	3	3	6	2
1958-59	Springfield	AHL	70	43	42	85	19	.....	.....	.....	.....	.....
1959-60	New York	NHL	69	13	16	29	27	.....	.....	.....	.....	.....
1960-61	New York	NHL	38	2	6	8	18	.....	.....	.....	.....	.....
	Springfield	AHL	28	13	8	21	25	7	3	3	6	9
1961-62	New York	NHL	65	7	21	28	17	2	1	0	1	0
1962-63	New York	NHL	69	6	9	15	15	.....	.....	.....	.....	.....
1963-64	New York	NHL	4	0	0	0	0	.....	.....	.....	.....	.....
	Baltimore	AHL	64	23	33	56	35	.....	.....	.....	.....	.....
1964-65	Baltimore	AHL	72	30	41	71	16	5	1	2	3	0
1965-66	Baltimore	AHL	72	30	45	75	31	.....	.....	.....	.....	.....
1966-67	Baltimore	AHL	51	25	31	56	29	.....	.....	.....	.....	.....
	New York	NHL	20	6	3	9	0	4	0	1	1	0
1967-68	Pittsburgh	NHL	57	14	25	39	19	.....	.....	.....	.....	.....
1968-69	Pittsburgh	NHL	76	18	34	52	18	.....	.....	.....	.....	.....
<b>NHL Totals</b>			<b>398</b>	<b>66</b>	<b>114</b>	<b>180</b>	<b>114</b>	<b>6</b>	<b>1</b>	<b>1</b>	<b>1</b>	<b>0</b>



**RON SCHOCK**

Center 5'10" 175 lbs.

Born: Chapleau, Ont.  
December 19, 1943

Shoots Left

Last Amateur Club:  
Niagara Falls (Jrs.)

Married . . . . . two children . . . . . turned pro with Boston in 1964. . . . .  
acquired in trade from St. Louis this summer . . . . . has recorded 105  
points in NHL play . . . a hustling hockey player, Schock should provide  
the Pens with added muscle . . . . . has a brother, Dan, playing with  
Oklahoma City of the CHL . . . . Ron attends university in the off-season  
and is an ardent golfer . . . . . the family home is in Niagara Falls,  
Ontario.

Season	Club	Lea	Regular Schedule				Playoffs					
			GP	G	A	TP	PIM	GP	G	A	TP	PIM
1962-63	Kingston	EPHL	1	0	1	1	0	....	....	....	....	....
1963-64	Minneapolis	CPHL	....	....	....	....	....	2	0	3	3	0
	Boston	NHL	5	1	2	3	0	....	....	....	....	....
1964-65	Boston	NHL	33	4	7	11	14	....	....	....	....	....
1965-66	Boston	NHL	13	3	1	4	6	....	....	....	....	....
	San Francisco	WHL	43	11	21	32	28	7	1	5	6	6
1966-67	Boston	NHL	66	10	20	30	8	....	....	....	....	....
1967-68	St. Louis	NHL	55	9	9	18	17	12	1	2	3	0
	Kansas City	CPHL	10	2	8	10	2	....	....	....	....	....
1968-69	St. Louis	NHL	67	12	27	39	14	12	1	2	3	6
NHL Totals			239	39	66	105	59	24	2	4	6	6



**DAVE SIMPSON**

Defense 5'8" 180 lbs.

Born: Sudbury, Ont.  
March 13, 1948

Shoots Left

Last Amateur Club:  
Ft. William (Jrs.)

Married . . . . . turned pro with Amarillo last year . . . . . is a  
good solid checker who keeps other players "Honest" . . . . . Dave is  
rated as small for a defenseman but makes up for this with his aggressive  
type play . . . . . he served 185 minutes in penalties last year . . . . .  
he lives in Fort William, Ontario in the off-season and lists water skiing  
and swimming as his hobbies.

Season	Club	Lea	Regular Schedule				Playoffs					
			GP	G	A	TP	PIM	GP	G	A	TP	PIM
1968-69	Amarillo	CHL	58	6	11	17	185	....	....	....	....	....



### ALLAN SMITH

Goaltender 6' 195 lbs.

Born: Toronto, Ont.  
November 10, 1945

Shoots Left

Last Amateur Club:  
Toronto Marlboros (Jrs.)

Married . . . . . one child . . . . . drafted from Toronto this year . . . . .  
played with Tulsa and Rochester . . . beat Chicago 3-2 in his first NHL  
game with the Leafs . . . . . Smitty has a 2.91 average as an NHL  
goaltender . . . . . he is a standup type goalie and possesses quick re-  
flexes . . . . . he lists Johnny Bower as one of the men who helped his  
career . . . . . Smitty works at a hockey school in the summer and also  
plays golf and lacrosse . . . . he makes his off-season home in Toronto.

Season	Club	Lea	Regular Schedule				Playoffs			
			GP	GA	SO	GAPG	GP	GA	SO	GAPG
1965-66	Toronto	NHL	1-1/3	2	0	1.20	....	....	....	....
1966-67	Victoria	WHL	55	180	6	3.26	6	19	0	2.82
	Toronto	NHL	1	5	0	5.00	....	....	....	....
1967-68	Tulsa	CPHL	40	126	0	3.32	4	11	0	2.75
1968-69	Toronto	NHL	7	16	0	2.87	....	....	....	....
	Tulsa	CHL	8	22	0	2.87	....	....	....	....
	Rochester	AHL	34	114	2	3.45	....	....	....	....
NHL Totals			9-1/3	23	0	2.91	....	....	....	....



### RON SNELL

Right-Wing 5'10" 160 lbs.

Born: Regina, Sask.  
August 11, 1948

Shoots Right

Last Amateur Club:  
Regina

Single . . . . a product of the Regina Minor Hockey Association . . . . .  
turned pro with Amarillo last year . . . scored 26 goals in Amarillo and  
3 in 4 games with the Penguins . . . . . possesses a blistering shot . . . . .  
attends university of Saskatchewan summer school . . . . . Ron plays  
baseball and golf and enjoys swimming.

Season	Club	Lea	Regular Season					Playoffs				
			GP	G	A	TP	PIM	GP	G	A	TP	PIM
1968-69	Amarillo	CHL	69	26	19	45	43	....	....	....	....	....
	Pittsburgh	NHL	4	3	1	4	6	....	....	....	....	....
NHL Totals			4	3	1	4	6	....	....	....	....	....



**GARY SWAIN**

Left-Wing 5'8" 164 lbs.

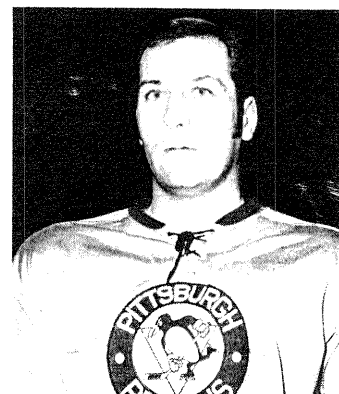
Born: Welland, Ont.  
September 11, 1947

Shoots Left

Last Amateur Club:  
Niagara Falls (Jrs.)

Married . . . one child . . . . . a 20 goal scorer with Amarillo last year . . . .  
is a good skater and accurate shooter . . . . . played 9 games with Pens  
last year and scored one goal . . . . Gary played on a Canadian Junior  
Championship team at Niagara Falls . . . . he is an assistant golf pro in  
the summer and works at the Lookout Point Golf Club in Fonthill,  
Ontario.

Season	Club	Lea	Regular Schedule					Playoffs				
			GP	G	A	TP	PIM	GP	G	A	TP	PIM
1968-69	Pittsburgh	NHL	9	1	1	2	0	....	....	....	....	....
	Amarillo	CHL	69	20	27	47	51	....	....	....	....	....
NHL Totals			9	1	1	2	0	....	....	....	....	....



**GEORGE SWARBRICK**

Right-Wing 5'10" 180 lbs.

Born: Moose Jaw, Sask.  
February 16, 1942

Shoots Right

Last Amateur Club:  
Moose Jaw (Srs.)

Married . . . two children . . . obtained in a trade with Oakland last year  
. . . . . turned pro in 1964-65 season . . . . . was a member of  
Canadian Olympic Team in 1963-64 . . . . . won Rookie of the year  
award in WHL . . . . . plays either left or right wing . . . . . in  
partnership with his brother in a lighting maintenance firm . . . . .  
makes his home in Omaha, Nebraska.

Season	Club	Lea	Regular Schedule					Playoffs				
			GP	G	A	TP	PIM	GP	G	A	TP	PIM
1960-61	Victoria	WHL	3	0	0	0	0	....	....	....	....	....
1964-65	San Francisco	WHL	70	22	22	44	66	....	....	....	....	....
1965-66	San Francisco	WHL	71	20	21	41	89	7	2	3	5	8
1966-67	California	WHL	71	31	22	53	74	6	1	3	4	16
1967-68	Oakland	NHL	49	13	5	18	62	....	....	....	....	....
1968-69	Oakland	NHL	50	3	13	16	75	....	....	....	....	....
	Pittsburgh	NHL	19	1	6	7	28	....	....	....	....	....
NHL Totals			118	17	24	41	165	....	....	....	....	....



**BRYAN WATSON**

Defense 5'10" 170 lbs.

Born: Bancroft, Ont.  
November 14, 1942

Shoots Right

Last Amateur Club:  
Peterborough Petes (Jrs.)

Married . . . one child . . . came to Penguins in a trade with Oakland . . . has played in NHL with Montreal, Detroit and Oakland . . . won best defenseman award in CHL in 1967-68 season . . . is strong on offense and defense . . . was nicknamed "Superpest" for his shadowing of Bobby Hull . . . has fully recovered from a knee injury . . . runs a hockey school in the summer . . . lives year round in Pittsburgh.

Season	Club	Lea	Regular Schedule					Playoffs				
			GP	G	A	TP	PIM	GP	G	A	TP	PIM
1962-63	Hull-Ottawa	EPHL	.....	.....	.....	.....	.....	3	1	1	2	0
1963-64	Omaha	CPHL	9	1	1	2	12	.....	.....	.....	.....	.....
	Mtl. Canadiens	NHL	39	0	2	2	18	6	0	0	0	2
1964-65	Quebec	AHL	64	1	16	17	186	5	0	0	0	35
	Mtl. Canadiens	NHL	5	0	1	1	7	.....	.....	.....	.....	.....
1965-66	Detroit	NHL	70	2	7	9	133	12	2	0	2	30
1966-67	Memphis	CPHL	16	1	3	4	76	.....	.....	.....	.....	.....
	Detroit	NHL	48	0	1	1	66	.....	.....	.....	.....	.....
1967-68	Mtl. Canadiens	NHL	12	0	1	1	9	.....	.....	.....	.....	.....
	Cleveland	AHL	12	2	4	6	22	.....	.....	.....	.....	.....
	Houston	CPHL	50	2	37	39	293	.....	.....	.....	.....	.....
1968-69	Oakland	NHL	50	2	3	5	97	.....	.....	.....	.....	.....
	Pittsburgh	NHL	18	0	4	4	35	.....	.....	.....	.....	.....
	<b>NHL Totals</b>		<b>242</b>	<b>4</b>	<b>19</b>	<b>23</b>	<b>365</b>	<b>18</b>	<b>2</b>	<b>0</b>	<b>2</b>	<b>32</b>



**ROBERT (BOB) WOYTOWICH**

Defense 5'11" 195 lbs.

Born: Winnipeg, Man.  
August 18, 1941

Shoots Right

Last Amateur Club:  
Winnipeg Rangers (Jrs.)

Married . . . . . one child . . . . . turned pro in 1962 with Sudbury Wolves of EPHL . . . . . starting sixth season in NHL . . . . . played with Boston and Minnesota before coming to the Penguins . . . . . he is an excellent skater and a fierce competitor . . . . . scored nine goals last season . . . . . has his own rooting section named "The Polish Army" . . . . . works in public relations in the off-season in his native Winnipeg

Season	Club	Lea	Regular Schedule					Playoffs				
			GP	G	A	TP	PIM	GP	G	A	TP	PIM
1960-61	Seattle	WHL	2	0	0	0	0	.....	.....	.....	.....	.....
1962-63	Sudbury	EPHL	71	17	27	44	69	8	0	3	3	0
1963-64	St. Paul	CPHL	68	9	31	40	101	11	2	4	6	8
1964-65	Hershey	AHL	48	5	21	26	56	.....	.....	.....	.....	.....
	Boston	NHL	21	2	10	12	16	.....	.....	.....	.....	.....
1965-66	Boston	NHL	68	2	17	19	75	.....	.....	.....	.....	.....
1966-67	Boston	NHL	64	2	7	9	43	.....	.....	.....	.....	.....
1967-68	Minnesota	NHL	66	4	17	21	63	14	0	1	1	18
1968-69	Pittsburgh	NHL	71	9	20	29	62	.....	.....	.....	.....	.....
	<b>NHL Totals</b>		<b>290</b>	<b>19</b>	<b>71</b>	<b>90</b>	<b>259</b>	<b>14</b>	<b>0</b>	<b>1</b>	<b>1</b>	<b>18</b>

## NHL FINAL STANDINGS

### 1968-69 FINAL STANDINGS

	GP	EAST DIVISION				GF	GA	PTS
		W	L	T				
Montreal	76	46	19	11	271	202	103	
Boston	76	42	18	16	303	221	100	
New York	76	41	26	9	231	196	91	
Toronto	76	35	26	15	234	217	85	
Detroit	76	33	31	12	239	221	78	
Chicago	76	34	33	9	280	246	77	

	GP	WEST DIVISION				GF	GA	PTS
		W	L	T				
St. Louis	76	37	25	14	204	157	88	
Oakland	76	29	36	11	219	251	69	
Philadelphia	76	20	35	21	174	225	61	
Los Angeles	76	24	42	10	185	260	58	
Pittsburgh	76	20	45	11	189	252	51	
Minnesota	76	18	43	15	189	270	51	

### HOME — AWAY RECORDS

	GP	W	L	T	GF	GA	TP
Penguins							
Home	38	12	20	6	99	113	30
Away	38	8	25	5	90	139	21

### PENGUINS' 1968-69 TEAM-BY-TEAM RECORDS

	GP	WEST DIVISION				GF	GA	TP
		W	L	T				
PITTSBURGH								
vs. Los Angeles	8	2	5	1	20	24	5	
vs. Minnesota	8	5	3	0	25	15	10	
vs. Oakland	8	2	4	2	24	31	6	
vs. Philadelphia	8	1	4	3	13	26	5	
vs. St. Louis	8	3	4	1	15	16	7	
Totals	40	13	20	7	97	112	33	

	GP	EAST DIVISION				GF	GA	TP
		W	L	T				
PITTSBURGH								
vs. Boston	6	1	5	0	13	25	2	
vs. Chicago	6	2	4	0	22	28	4	
vs. Detroit	6	2	4	0	14	20	4	
vs. Montreal	6	1	4	1	16	21	3	
vs. New York	6	1	5	0	16	27	2	
vs. Toronto	6	0	3	3	11	19	3	
Totals	36	7	25	4	92	140	18	

## PENGUINS' TEAM-BY-TEAM HOME RECORDS

	GP	WEST DIVISION				GF	GA	TP
		W	L	T				
PITTSBURGH								
vs. Los Angeles	4	1	2	1	13	12	3	
vs. Minnesota	4	2	2	0	14	8	4	
vs. Oakland	4	1	2	1	12	13	3	
vs. Philadelphia	4	1	1	2	5	7	4	
vs. St. Louis	4	2	2	0	10	9	4	
Total	20	7	9	4	54	49	18	

	GP	EAST DIVISION				GF	GA	TP
		W	L	T				
PITTSBURGH								
vs. Boston	3	1	2	0	6	8	2	
vs. Chicago	3	1	2	0	13	17	2	
vs. Detroit	3	2	1	0	11	12	4	
vs. Montreal	3	0	2	1	4	9	1	
vs. New York	3	1	2	0	7	9	2	
vs. Toronto	3	0	2	1	4	9	1	
Total	18	5	11	2	45	64	12	

## PENGUINS' TEAM-BY-TEAM ROAD RECORDS

	GP	WEST DIVISION				GF	GA	TP
		W	L	T				
PITTSBURGH								
vs. Los Angeles	4	1	3	0	7	12	2	
vs. Minnesota	4	3	1	0	11	7	6	
vs. Oakland	4	1	2	1	12	18	3	
vs. Philadelphia	4	0	3	1	8	19	1	
vs. St. Louis	4	1	2	1	5	7	3	
Total	20	6	11	3	43	63	15	

	GP	EAST DIVISION				GF	GA	TP
		W	L	T				
PITTSBURGH								
vs. Boston	3	0	3	0	7	17	0	
vs. Chicago	3	1	2	0	9	11	2	
vs. Detroit	3	0	3	0	3	8	0	
vs. Montreal	3	1	2	0	12	12	2	
vs. New York	3	0	3	0	9	18	0	
vs. Toronto	3	0	1	2	7	10	2	
Total	18	2	14	2	47	76	6	

### PENGUINS' RECORD BY MONTHS

MONTH	GP	W	Overall			TP
			L	T		
October	7	1	4	2		4
November	14	4	8	2		10
December	14	2	10	2		6
January	14	3	10	1		7
February	12	4	6	2		10
March	15	6	7	2		14

MONTH	GP	W	Home			GP	W	Away			TP
			L	T				L	T		
October	4	1	2	1	3	3	0	2	1	1	
November	7	1	4	2	4	7	3	4	0	6	
December	7	1	6	0	2	7	1	4	2	4	
January	6	1	4	1	3	8	2	6	0	4	
February	8	4	2	2	10	4	0	4	0	0	
March	6	4	2	0	8	9	2	5	2	6	

### PENGUINS' RECORD BY DAYS

DAY	GP	W	Overall			TP
			L	T		
Sunday	16	3	12	1		7
Monday	0	0	0	0		0
Tuesday	3	1	2	0		2
Wednesday	19	7	10	2		16
Thursday	13	5	8	0		10
Friday	0	0	0	0		0
Saturday	25	4	13	8		16

DAY	GP	W	Home			GP	W	Away			TP
			L	T				L	T		
Sunday	4	2	2	0	4	12	1	10	1	3	
Monday	0	0	0	0	0	0	0	0	0	0	
Tuesday	1	0	1	0	0	2	1	1	0	2	
Wednesday	11	5	5	1	11	8	2	5	1	5	
Thursday	5	3	2	0	6	8	2	6	0	4	
Friday	0	0	0	0	0	0	0	0	0	0	
Saturday	17	2	10	5	9	8	2	3	3	7	

### 1968-69 GAME BY GAME RESULTS \*

GAME	DAY	DATE	OPPONENT	SCORE	RESULT	W-L-T
1	Sat.	Oct. 12	MONTREAL	1-1	T	0-0-1
2	Wed.	Oct. 16	Toronto	2-2	T	0-0-2
3	Thur.	Oct. 17	Philadelphia	3-0	L	0-1-2
4	Sat.	Oct. 19	BOSTON	5-1	L	0-2-2
5	Wed.	Oct. 23	CHICAGO	8-5	L	0-3-2
6	Sat.	Oct. 26	ST. LOUIS	4-2	W	1-3-2
7	Wed.	Oct. 30	New York	7-3	L	1-4-2
8	Sat.	Nov. 2	Los Angeles	3-2	L	1-5-2
9	Sun.	Nov. 3	Oakland	3-1	W	2-5-2
10	Wed.	Nov. 6	ST. LOUIS	3-1	L	2-6-2
11	Thur.	Nov. 7	Montreal	5-4	L	2-7-2
12	Sat.	Nov. 9	PHILADELPHIA	3-0	L	2-8-2
13	Wed.	Nov. 13	Chicago	6-5	L	2-9-2
14	Thur.	Nov. 14	CHICAGO	6-4	L	2-10-2
15	Sat.	Nov. 16	NEW YORK	2-1	L	2-11-2
16	Wed.	Nov. 20	Toronto	5-2	L	2-12-2
17	Thur.	Nov. 21	OAKLAND	3-1	W	3-12-2
18	Sat.	Nov. 23	LOS ANGELES	2-2	T	3-12-3
19	Wed.	Nov. 27	TORONTO	3-3	T	3-12-4
20	Thur.	Nov. 28	Chicago	3-2	W	4-12-4
21	Sat.	Nov. 30	Los Angeles	4-2	W	5-12-4
22	Sun.	Dec. 1	Oakland	4-4	T	5-12-5
23	Wed.	Dec. 4	DETROIT	7-2	L	5-13-5
24	Sat.	Dec. 7	St. Louis	1-1	T	5-13-6
25	Sun.	Dec. 8	TORONTO	4-1	L	5-14-6
26	Wed.	Dec. 11	Minnesota	4-2	W	6-14-6
27	Sat.	Dec. 14	LOS ANGELES	2-1	L	6-15-6
28	Sun.	Dec. 15	Boston	5-3	L	6-16-6
29	Tue.	Dec. 17	Philadelphia	8-2	L	6-17-6
30	Sat.	Dec. 21	MINNESOTA	3-1	L	6-18-6
31	Sun.	Dec. 22	Chicago	3-1	L	6-19-6
32	Wed.	Dec. 25	DETROIT	6-3	W	7-19-6
33	Thur.	Dec. 26	St. Louis	3-2	L	7-20-6
34	Sat.	Dec. 28	OAKLAND	4-3	L	7-21-6
35	Tue.	Dec. 31	MONTREAL	4-3	L	7-22-6
36	Thur.	Jan. 2	Montreal	5-2	W	8-22-6
37	Sat.	Jan. 4	PHILADELPHIA	1-1	T	8-22-7
38	Sun.	Jan. 5	Detroit	2-1	L	8-23-7
39	Thur.	Jan. 9	MINNESOTA	7-2	W	9-23-7
40	Sat.	Jan. 11	OAKLAND	4-2	L	9-24-7
41	Sun.	Jan. 12	Boston	8-4	L	9-25-7
42	Wed.	Jan. 15	Minnesota	3-1	W	10-25-7
43	Thur.	Jan. 16	Detroit	3-2	L	10-26-7
44	Sat.	Jan. 18	Los Angeles	4-0	L	10-27-7
45	Sun.	Jan. 19	Oakland	6-3	L	10-28-7
46	Thur.	Jan. 23	MINNESOTA	3-1	L	10-29-7
47	Sat.	Jan. 25	TORONTO	2-0	L	10-30-7
48	Sun.	Jan. 26	Philadelphia	5-3	L	10-31-7
49	Wed.	Jan. 29	ST. LOUIS	2-1	L	10-32-7
50	Sat.	Feb. 1	PHILADELPHIA	2-2	T	10-32-8
51	Sun.	Feb. 2	New York	7-3	L	10-33-8
52	Wed.	Feb. 5	NEW YORK	3-2	W	11-33-8
53	Sat.	Feb. 8	LOS ANGELES	4-2	L	11-34-8
54	Sun.	Feb. 9	Minnesota	3-1	L	11-35-8
55	Wed.	Feb. 12	St. Louis	2-0	L	11-36-8
56	Sat.	Feb. 15	OAKLAND	4-4	T	11-36-9
57	Sun.	Feb. 16	MONTREAL	4-0	L	11-37-9
58	Wed.	Feb. 19	BOSTON	3-0	W	12-37-9
59	Thur.	Feb. 20	Detroit	3-0	L	12-38-9
60	Sat.	Feb. 22	DETROIT	3-2	W	13-38-9
61	Thur.	Feb. 27	CHICAGO	4-3	W	14-38-9
62	Sat.	Mar. 1	Toronto	3-3	T	14-38-10
63	Sun.	Mar. 2	Boston	4-0	L	14-39-10
64	Wed.	Mar. 5	ST. LOUIS	4-2	W	15-39-10
65	Sat.	Mar. 8	NEW YORK	5-3	L	15-40-10
66	Wed.	Mar. 12	New York	4-3	L	15-41-10
67	Sat.	Mar. 15	Los Angeles	3-1	L	15-42-10
68	Sun.	Mar. 16	Oakland	7-2	L	15-43-10
69	Wed.	Mar. 19	BOSTON	3-2	L	15-44-10
70	Thur.	Mar. 20	Montreal	5-3	L	15-45-10
71	Sat.	Mar. 22	St. Louis	2-1	W	16-45-10
72	Sun.	Mar. 23	MINNESOTA	5-0	W	17-45-10
73	Tue.	Mar. 25	Minnesota	3-1	W	18-45-10
74	Wed.	Mar. 26	LOS ANGELES	8-4	W	19-45-10
75	Sat.	Mar. 29	Philadelphia	3-3	T	19-45-11
76	Sun.	Mar. 30	PHILADELPHIA	2-1	W	20-45-11

\*Home games in capital letters.



### GAME BY GAME HOME RESULTS

GAME	DAY	DATE	OPPONENT	SCORE	RESULT	W-L-T
1	Sat.	Oct. 12	Montreal	1-1	T	0-0-1
2	Sat.	Oct. 19	Boston	5-1	L	0-1-1
3	Wed.	Oct. 23	Chicago	8-5	L	0-2-1
4	Sat.	Oct. 26	St. Louis	4-2	W	1-2-1
5	Wed.	Nov. 6	St. Louis	3-1	L	1-3-1
6	Sat.	Nov. 9	Philadelphia	3-0	L	1-4-1
7	Thur.	Nov. 14	Chicago	6-4	L	1-5-1
8	Sat.	Nov. 16	New York	2-1	L	1-6-1
9	Thur.	Nov. 23	Oakland	3-1	W	2-6-1
10	Sat.	Nov. 23	Los Angeles	2-2	T	2-6-2
11	Wed.	Nov. 27	Toronto	3-3	T	2-6-3
12	Wed.	Dec. 4	Detroit	7-2	L	2-7-3
13	Sun.	Dec. 8	Toronto	4-1	L	2-8-3
14	Sat.	Dec. 14	Los Angeles	2-1	L	2-9-3
15	Sat.	Dec. 21	Minnesota	3-1	L	2-10-3
16	Wed.	Dec. 25	Detroit	6-3	W	3-10-3
17	Sat.	Dec. 28	Oakland	4-3	L	3-11-3
18	Tue.	Dec. 31	Montreal	4-3	L	3-12-3
19	Sat.	Jan. 4	Philadelphia	1-1	T	3-12-4
20	Thur.	Jan. 9	Minnesota	7-2	W	4-12-4
21	Sat.	Jan. 11	Oakland	4-2	L	4-13-4
22	Thur.	Jan. 23	Minnesota	3-1	L	4-14-4
23	Sat.	Jan. 25	Toronto	2-0	L	4-15-4
24	Wed.	Jan. 29	St. Louis	2-1	L	4-16-4
25	Sat.	Feb. 1	Philadelphia	2-2	T	4-16-5
26	Wed.	Feb. 5	New York	3-2	W	5-16-5
27	Sat.	Feb. 8	Los Angeles	4-2	L	5-17-5
28	Sat.	Feb. 15	Oakland	4-4	T	5-17-6
29	Sun.	Feb. 16	Montreal	4-0	L	5-18-6
30	Wed.	Feb. 19	Boston	3-0	W	6-18-6
31	Sat.	Feb. 22	Detroit	3-2	W	7-18-6
32	Thur.	Feb. 27	Chicago	4-3	W	8-18-6
33	Wed.	Mar. 5	St. Louis	4-2	W	9-18-6
34	Sat.	Mar. 8	New York	5-3	L	9-19-6
35	Wed.	Mar. 19	Boston	3-2	L	9-20-6
36	Sun.	Mar. 23	Minnesota	5-0	W	10-20-6
37	Wed.	Mar. 26	Los Angeles	8-4	W	11-20-6
38	Sun.	Mar. 30	Philadelphia	2-1	W	12-20-6

### GAME BY GAME AWAY RESULTS

GAME	DAY	DATE	OPPONENT	SCORE	RESULT	W-L-T
1	Wed.	Oct. 16	Toronto	2-2	T	0-0-1
2	Thur.	Oct. 17	Philadelphia	3-0	L	0-1-1
3	Wed.	Oct. 30	New York	7-3	L	0-2-1
4	Sat.	Nov. 2	Los Angeles	3-2	L	0-3-1
5	Sun.	Nov. 3	Oakland	3-1	W	1-3-1
6	Thur.	Nov. 7	Montreal	5-4	L	1-4-1
7	Wed.	Nov. 13	Chicago	6-5	L	1-5-1
8	Wed.	Nov. 20	Toronto	5-2	L	1-6-1
9	Thur.	Nov. 28	Chicago	3-2	W	2-6-1
10	Sat.	Nov. 30	Los Angeles	4-2	W	3-6-1
11	Sun.	Dec. 1	Oakland	4-4	T	3-6-2
12	Sat.	Dec. 7	St. Louis	1-1	T	3-6-3
13	Wed.	Dec. 11	Minnesota	4-2	W	4-6-3
14	Sun.	Dec. 15	Boston	5-3	L	4-7-3
15	Tue.	Dec. 17	Philadelphia	8-2	L	4-8-3
16	Sun.	Dec. 22	Chicago	3-1	L	4-9-3
17	Thur.	Dec. 26	St. Louis	3-2	L	4-10-3
18	Thur.	Jan. 2	Montreal	5-2	W	5-10-3
19	Sun.	Jan. 5	Detroit	2-1	L	5-11-3
20	Sun.	Jan. 12	Boston	8-4	L	5-12-3
21	Wed.	Jan. 15	Minnesota	3-1	W	6-12-3
22	Thur.	Jan. 16	Detroit	3-2	L	6-13-3
23	Sat.	Jan. 18	Los Angeles	4-0	L	6-14-3
24	Sun.	Jan. 19	Oakland	6-3	L	6-15-3
25	Sun.	Jan. 26	Philadelphia	5-3	L	6-16-3
26	Sun.	Feb. 2	New York	7-3	L	6-17-3
27	Sun.	Feb. 9	Minnesota	3-1	L	6-18-3
28	Wed.	Feb. 12	St. Louis	2-0	L	6-19-3
29	Thur.	Feb. 20	Detroit	3-0	L	6-20-3
30	Sat.	Mar. 1	Toronto	3-3	T	6-20-4
31	Sun.	Mar. 2	Boston	4-0	L	6-21-4
32	Wed.	Mar. 12	New York	4-3	L	6-22-4
33	Sat.	Mar. 15	Los Angeles	3-1	L	6-23-4
34	Sun.	Mar. 16	Oakland	7-2	L	6-24-4
35	Thur.	Mar. 20	Montreal	5-3	L	6-25-4
36	Sat.	Mar. 22	St. Louis	2-1	W	7-25-4
37	Tue.	Mar. 25	Minnesota	3-1	W	8-25-4
38	Sat.	Mar. 29	Philadelphia	3-3	T	8-25-5

### INDIVIDUAL SCORING AND PENALTY MINUTES

	GP	G	A	TP	PIM
Ken Schinkel	76	18	34	52	18
Charlie Burns	76	13	38	51	22
Keith McCreary	70	25	23	48	42
Earl Ingarfield					
Pitt.	40	8	15	23	4
Oak.	26	8	15	23	8
<b>Total</b>	<b>66</b>	<b>16</b>	<b>30</b>	<b>46</b>	<b>12</b>
Jean Pronovost	76	16	25	41	41
Gene Ubriaco					
Pitt.	49	15	11	26	14
Oak.	26	4	7	11	14
<b>Total</b>	<b>75</b>	<b>19</b>	<b>18</b>	<b>37</b>	<b>28</b>
Lou Angotti	71	17	20	37	36
Val Fonteyne	74	12	17	29	2
Wally Boyer	62	10	19	29	17
Bob Woytowich	71	9	20	29	62
Leo Boivin					
Pitt.	41	5	13	18	26
Minn.	28	1	6	7	16
<b>Total</b>	<b>69</b>	<b>6</b>	<b>19</b>	<b>25</b>	<b>42</b>
Billy Harris					
Oak.	19	0	4	4	2
Pitt.	54	7	13	20	8
<b>Total</b>	<b>73</b>	<b>7</b>	<b>17</b>	<b>24</b>	<b>10</b>
George Swarbrick					
Oak.	50	3	13	16	75
Pitt.	19	1	6	7	28
<b>Total</b>	<b>69</b>	<b>4</b>	<b>19</b>	<b>23</b>	<b>103</b>
Noel Price	73	2	18	20	61
Bob Dillabough					
Pitt.	14	0	0	0	2
Oak.	48	7	12	19	4
<b>Total</b>	<b>62</b>	<b>7</b>	<b>12</b>	<b>19</b>	<b>6</b>
Billy Dea	66	10	8	18	4
Dunc McCallum	62	5	13	18	81
Duane Rupp					
Minn.	29	2	1	3	8
Pitt.	30	3	10	13	24
<b>Total</b>	<b>59</b>	<b>5</b>	<b>11</b>	<b>16</b>	<b>32</b>
Paul Andrea	25	7	6	13	2

### INDIVIDUAL SCORING AND PENALTY MINUTES (CON'T)

	GP	G	A	TP	PIM
Dick Mattiussi					
Pitt.	12	0	2	2	14
Oak.	24	1	9	10	16
<b>Total</b>	<b>36</b>	<b>1</b>	<b>11</b>	<b>12</b>	<b>30</b>
Bryan Watson					
Oak.	50	2	3	5	97
Pitt.	18	0	4	4	35
<b>Total</b>	<b>68</b>	<b>2</b>	<b>7</b>	<b>9</b>	<b>132</b>
Bill Speer	34	1	4	5	27
Tracy Pratt	18	0	5	5	34
Ron Snell	4	3	1	4	6
Doug Barrie	8	1	1	2	8
Gary Swain	9	1	1	2	0
John Arbour	17	0	2	2	35
Jean Guy Lagace	17	0	1	1	14
Bill Lecaine	4	0	0	0	0
Joe Daley	29	0	0	0	2
Les Binkley	50	0	0	0	0
Marv Edwards	1	0	0	0	0
<b>PITTSBURGH TOTALS</b>	<b>76</b>	<b>189</b>	<b>347</b>	<b>536</b>	<b>664</b>

### 1968-69 GOALTENDING RECORDS

	GP	MP	GA	SO	AVG.
Joe Daley	29	1615	87(2)	2	3.23
Les Binkley	50	2885	158(2)	0	3.29
Marv Edwards	1	60	3	0	3.00
<b>TOTALS</b>	<b>76</b>	<b>4560</b>	<b>252</b>	<b>2</b>	<b>3.32</b>

### INDIVIDUAL SCORING BREAKDOWN

PLAYER	GP	TG	WG	TG	GF	PF	PPG	SHG	H	A
Paul Andrea	25	7	1	0	0	2	5	0	2	5
Lou Angotti	71	17	2	2	2	6	3	0	11	6
John Arbor	17	0	0	0	0	0	0	0	0	0
Doug Barrie	8	1	0	0	0	0	0	0	1	0
Leo Boivin	41	5	1	9	2	4	2	9	5	0
Wally Boyer	62	10	0	3	3	4	2	0	4	6
Charlie Burns	76	13	1	1	3	4	1	1	8	5
Billy Dea	66	10	1	0	1	2	2	0	1	9
Bob Dillabough	14	0	0	0	0	0	0	0	0	0
Val Fonteyne	74	12	2	0	3	4	0	1	3	9
Billy Harris	54	7	0	0	2	2	2	0	4	3
Earl Ingarfield	40	8	0	0	2	4	3	0	5	3
Jean Guy Lagace	17	0	0	0	0	0	0	0	0	0
Billy LeCaine	4	0	0	0	0	0	0	0	0	0
Dung McCallum	62	5	1	0	1	1	2	1	3	2
Keith McCreary	70	25	4	1	8	11	8	0	15	10
Dick Mattiussi	12	0	0	0	0	0	0	0	0	0
Tracy Pratt	18	0	0	0	0	0	0	0	0	0
Noel Price	73	2	0	0	0	0	1	0	1	1
Jean Pronovost	76	16	1	1	1	7	5	2	6	10
Duane Rupp	30	3	0	0	2	2	0	0	3	0
Ken Schinkel	76	18	2	1	1	3	8	1	14	4
Ron Snell	4	3	1	0	0	2	2	0	1	2
Billy Speer	34	1	1	0	0	0	1	0	1	0
Gary Swain	9	1	0	1	0	0	0	0	0	1
George Swarbrick	50	1	0	0	1	1	1	0	1	0
Gene Ubriaco	49	15	2	1	2	6	4	0	6	9
Bryan Watson	18	0	0	0	0	0	0	0	0	0
Bob Woytowich	71	9	0	0	0	3	1	2	4	5
<b>Totals</b>	<b>76</b>	<b>189</b>	<b>20</b>	<b>11</b>	<b>34</b>	<b>68</b>	<b>53</b>	<b>8</b>	<b>99</b>	<b>90</b>

Key to Abbreviations: GP — Games Played; TG — Total Goals; WG — Winning Goals; TG — Tying Goals; GF — Game First; PF — Pittsburgh First; PPG — Power Play Goal; SHG — Short Handed Goals; H — Home; A — Away

## 1968-69 HIGHS AND LOWS

**TEAM**

LONGEST WINNING STREAK — 4, Mar. 22 thru Mar. 26

LONGEST LOSING STREAK — 7, (twice) Nov. 6 thru Nov. 20, Jan. 16 thru Jan. 29

LONGEST UNBEATEN STREAK — 6, (twice) Nov. 21 thru Dec. 1, Mar. 22 thru Mar. 30

LONGEST WINLESS STREAK — 9, Jan. 16 thru Feb. 2

LONGEST HOME WINNING STREAK — 4, Feb. 19 thru Mar. 5

LONGEST HOME LOSING STREAK — 4, (3 times) Nov. 6 thru Nov. 16, Dec. 4 thru Dec. 21, Jan. 11 thru Jan. 29

LONGEST HOME UNBEATEN STREAK — 4, Feb. 19 thru Mar. 5

LONGEST HOME WINLESS STREAK — 6, Nov. 23 thru Dec. 21

LONGEST AWAY WINNING STREAK — 2, (twice) Nov. 28 thru Nov. 30, Mar. 22 thru Mar. 25

LONGEST AWAY LOSING STREAK — 8, Jan. 16 thru Feb. 20

LONGEST AWAY UNBEATEN STREAK — 5, Nov. 28 thru Dec. 11

LONGEST AWAY WINLESS STREAK — 14, Jan. 16 thru Mar. 20

MOST GOALS, ONE GAME — 8, vs. Los Angeles, Mar. 26

MOST GOALS AGAINST, ONE GAME — 8, (twice) at Philadelphia, Dec. 17, at Boston, Jan. 12

MOST GOALS SCORED AT HOME, ONE GAME — 8, vs. Los Angeles, Mar. 26

MOST GOALS SCORED AWAY, ONE GAME — 5, at Montreal, Jan. 2

MOST GOALS SCORED AGAINST AT HOME, ONE GAME — 8, Chicago, Oct. 23

MOST GOALS SCORED AGAINST AWAY, ONE GAME — 8, (twice) Philadelphia, Dec. 17, Boston, Jan. 12

MOST GOALS, ONE PERIOD — 4, (twice) (1st) vs. Minnesota, Jan. 9, (2nd) vs. Los Angeles, Mar. 26

MOST GOALS ONE PERIOD — 4, (1st) vs. Chicago, Oct. 23, (3rd) at N.Y., Oct. 30, (2nd) at Montreal, Nov. 7, (3rd) at Chicago, Nov. 13, (3rd) at Toronto, Nov. 20, (3rd) at Philadelphia, Dec. 17

GREATEST WINNING MARGIN — 5, vs. Minnesota (5-0), Mar. 23, 5, vs. Minnesota (7-2), Jan. 9

GREATEST LOSING MARGIN — 6, at Philadelphia (8-2), Dec. 17

**INDIVIDUAL**

MOST CONSECUTIVE GAMES SCORED — 4, Ken Schinkel, Feb. 1 thru Feb. 8

MOST CONSECUTIVE GAMES SCORED ASSISTS — 4, Lou Angotti, Dec. 22 thru Dec. 28, 4, Charlie Burns, Jan. 5 thru Jan. 12; Mar. 23 thru Mar. 29, 4, Tracy Pratt, Mar. 25 thru Mar. 30, 4, Jean Pronovost, Mar. 22 thru Mar. 29, 5, Ken Schinkel, Feb. 1 thru Feb. 8

MOST CONSECUTIVE GAMES SCORED POINTS — 5, Earl Ingarfield, Oct. 30 thru Nov. 7, 5, Jean Pronovost, Nov. 14 thru Nov. 21, 4, Ken Schinkel, Jan. 26 thru Feb. 8

MOST CONSECUTIVE GAMES PENALIZED — 5, Dunc McCallum, Oct. 26 thru Nov. 6

MOST GOALS, ONE GAME — 2, held by many players; 2 by Keith McCreary 5 games, at Boston, Dec. 15, at Philadelphia, Dec. 17, vs. Detroit, Dec. 25, vs. Boston, Feb. 19, vs. Minnesota, Mar. 23

MOST ASSISTS, ONE GAME — 4, Charlie Burns, vs. Los Angeles, Mar. 26

MOST POINTS, ONE GAME — 4, Charlie Burns, vs. Los Angeles, Mar. 26 (4 assists)

MOST PENALTIES, ONE GAME — 3, Wally Boyer, vs. Detroit, Dec. 25; 3, Duane Rupp, vs. St. Louis, Mar. 5

MOST PENALTY MINUTES, ONE GAME — 12, Bryan Watson, vs. St. Louis, Mar. 5

MOST GOALS, ONE PERIOD — 2, Charlie Burns, at Chicago, Nov. 13 (3rd); 2, Keith McCreary, vs. Detroit, Dec. 25 (2nd); 2, Jean Pronovost at Minnesota, Mar. 25 (3rd); 2, Ken Schinkel vs. New York, Feb. 5 (3rd)

MOST ASSISTS, ONE PERIOD — 2, held by many players

FASTEST PITTSBURGH GOAL AT START OF GAME — 1:00, Charlie Burns vs. Toronto, Nov. 27, Pittsburgh 3, Toronto 3

FASTEST PITTSBURGH GOAL AT START OF PERIOD — 0:17, Val Fonteyne vs. Los Angeles, 2nd Period, Nov. 23, Pittsburgh 2, Los Angeles 2

FASTEST GOAL AGAINST AT START OF GAME — 0:24, Dale Rolfe at Los Angeles, Nov. 2 Los Angeles 3, Pittsburgh 2

FASTEST GOAL AGAINST AT START OF PERIOD — 0:10, Gene Ubriaco at Oakland, Mar. 16, Oakland 7, Pittsburgh 2

PENALTY SHOTS — 1 Charlie Burns against Ed Giacomini at Pittsburgh, Feb. 5, no goal scored, Pittsburgh 3, New York 2

## PENGUIN FIRSTS

FIRST VICTORY — October 13, 1967 at St. Louis. Penguins 3, St. Louis 1.

FIRST HOME VICTORY — October 21, 1967. Penguins 4, Chicago 2.

FIRST TIE — October 18, 1967 at Pittsburgh. Penguins 3, Minnesota 3.

FIRST TIE AWAY — November 25, 1967 at Oakland. Penguins 2, Oakland 2.

FIRST DEFEAT — October 11, 1967 at Pittsburgh. Montreal 2, Penguins 1.

FIRST DEFEAT AWAY — October 19, 1967 at Philadelphia. Philadelphia 2, Penguins 1.

FIRST GOAL — Andy Bathgate, October 11, 1967 against Montreal, 3rd period.

FIRST ASSISTS — Noel Price and Ab McDonald, October 11, 1967 against Montreal, 3rd period.

FIRST PENALTY — Ken Schinkel, October 11, 1967 against Montreal, 1st period, cross checking.

FIRST SHUTOUT — Les Binkley, November 4, 1967 at Oakland. Penguins 1, Oak. 0.

FIRST SHUTOUT AGAINST — Doug Favell, October 19, 1967 at Philadelphia. Philadelphia 1, Pittsburgh 0.

## UPCOMING PENGUIN MILESTONES

Player	GAMES	
	Needs	Milestone
Dean Prentice	34	1100
Billy Harris	31	800
Val Fonteyne	61	675
Ken Schinkel	2	400

Player	POINTS	
	Needs	Milestone
Dean Prentice	23	700
Ken Schinkel	20	200
Val Fonteyne	29	200
Wally Boyer	6	100
Bob Woytowich	10	100
Keith McCreary	23	100

Player	GOALS	
	Needs	Milestone
Dean Prentice	4	300

Player	ASSISTS	
	Needs	Milestone
Dean Prentice	19	400
Bob Woytowich	29	100

### PITTSBURGH VS. BOSTON

1968-69	GP	W	L	T	PTS.	GF	GA	PIM
Pittsburgh	6	1	5	0	2	13	25	53
Boston	6	5	1	0	10	25	13	85

AT PITTSBURGH				AT BOSTON			
Oct. 19 - Bos.	5	Pitt.	1	Dec. 15 - Bos.	5	Pitt.	3
Feb. 19 - Pitt.	3	Bos.	0	Jan. 12 - Bos.	8	Pitt.	4
Mar. 19 - Bos.	3	Pitt.	2	Mar. 2 - Bos.	4	Pitt.	0

TOTAL VS. BOSTON	GP	W	L	T	PTS.	GF	GA	PIM
(2 Seasons)	10	3	7	0	6	23	35	80

PITTSBURGH						BOSTON					
PLAYER	GP	G	A	TP	PIM	PLAYER	GP	G	A	TP	PIM
Andrea	4	0	1	1	2	Awrey	5	0	0	0	6
Angotti	5	2	0	2	0	Bailey	1	0	0	0	0
Arbour	1	0	0	0	0	Bucyk	6	1	4	5	2
Barrie	1	0	0	0	0	Cashman	5	0	1	1	7
Boivin	3	0	1	1	0	Doak	1	0	1	1	2
Boyer	5	1	1	2	0	Esposito	5	7	5	12	9
Burns	6	0	3	3	2	Gauthier	1	0	0	0	0
Dea	5	1	0	1	0	Gibbs	1	0	0	0	2
Dillabough	1	0	0	0	0	Green	4	1	4	5	6
Fonteyne	6	1	1	2	0	Harrison	1	0	1	1	0
Harris	4	1	0	1	2	Hodge	6	3	7	10	2
Ingarfield	3	1	3	4	0	Lonsberry	1	0	0	0	0
Lagace	1	0	0	0	0	Lorentz	2	1	1	2	0
McCallum	4	0	0	0	4	McKenzie	4	2	1	3	2
McCreary	6	5	1	6	5	Marcotte	1	0	0	0	0
Mattiussi	1	0	0	0	0	Murphy	6	2	3	5	4
Pratt	1	0	0	0	9	Orr	5	2	5	7	4
Price	6	0	4	4	4	Sanderson	4	0	2	2	15
Pronovost	6	1	1	2	8	Sather	6	0	0	0	0
Rupp	3	0	0	0	0	Shack	4	1	1	2	6
Schinkel	6	0	3	3	0	Stanfield	5	3	1	4	2
Speer	3	0	0	0	7	D. Smith	6	0	3	3	6
Swain	1	0	0	0	0	R. Smith	5	0	0	0	8
Swarbrick	3	0	0	0	2	Westfall	6	0	1	1	2
Ubriaco	3	0	0	0	2	Wilkins	1	1	0	1	0
Watson	2	0	2	2	0	Williams	1	1	0	1	0
Woytowich	5	0	1	1	6	Totals	6	25	41	66	85
Totals	6	13	22	35	53						

GOALIES	GP	MP	GA	SO	GAPG
Binkley	1	60	5	0	5.00
Daley	5	300	20	1	4.00
Totals	6	360	25	1	4.17

GOALIES	GP	MP	GA	SO	GAPG
Cheevers	4	240	9	0	2.25
Johnson	2	120	4	1	2.00
Totals	6	360	13	1	2.17

### PITTSBURGH VS. CHICAGO

1968-69	GP	W	L	T	PTS.	GF	GA	PIM
Pittsburgh	6	2	4	0	4	22	28	47
Chicago	6	4	2	0	8	28	22	71

AT PITTSBURGH				AT CHICAGO			
Oct. 23 - Chi.	8	Pitt.	5	Nov. 13 - Chi.	6	Pitt.	5
Nov. 14 - Chi.	6	Pitt.	4	Nov. 28 - Pitt.	3	Chi.	2
Feb. 27 - Pitt.	4	Chi.	3	Dec. 22 - Chi.	3	Pitt.	1

TOTALS VS. CHICAGO	GP	W	L	T	PTS.	GF	GA	PIM
(2 Seasons)	10	3	6	1	7	32	42	71

PITTSBURGH						CHICAGO					
PLAYER	GP	G	A	TP	PIM	PLAYER	GP	G	A	TP	PIM
Andrea	2	0	1	1	0	Boudrias	1	0	0	0	2
Angotti	6	4	2	6	6	B. Hull	6	9	6	15	4
Arbour	3	0	0	0	8	D. Hull	6	3	2	5	0
Barrie	1	0	0	0	2	Jarrett	6	0	2	2	12
Boivin	6	0	2	2	6	McMahon	1	0	1	1	0
Boyer	5	1	3	4	0	C. Maki	6	0	2	2	0
Burns	6	3	5	8	0	W. Maki	1	0	0	0	0
Dea	5	0	1	1	2	Marotte	6	0	4	4	12
Dillabough	3	0	0	0	2	Martin	6	0	2	2	0
Fonteyne	6	3	1	4	0	Mikita	5	6	5	11	0
Harris	3	0	0	0	0	Mohs	6	3	0	3	2
Ingarfield	5	1	3	4	0	Nesterenko	5	1	0	1	4
McCallum	5	2	3	5	0	Orbon	4	0	0	0	9
McCreary	6	2	3	5	2	Pappin	6	3	5	8	12
Price	6	0	2	2	2	Ravlich	6	0	1	1	2
Pronovost	6	1	4	5	9	Reid	3	0	0	0	0
Rupp	1	0	1	1	0	Schmautz	5	2	2	4	0
Schinkel	6	2	4	6	2	Stapleton	5	0	1	1	4
Speer	3	0	0	0	2	Wharram	6	1	6	7	0
Ubriaco	5	2	1	3	2	Young	5	0	0	0	8
Watson	1	0	0	0	0	Totals	6	28	39	67	71
Woytowich	6	1	3	4	2						
Totals	6	22	39	61	47						

GOALIES	GP	MP	GA	SO	GAPG
Dejardy	2	120	10	0	5.00
Dryden	3	180	7	0	2.33
Norris	1	60	5	0	5.00
Totals	6	360	22	0	3.67

### PITTSBURGH VS. DETROIT

1968-69	GP	W	L	T	PTS.	GF	GA	PIM
Pittsburgh	6	2	4	0	4	14	20	39
Detroit	6	4	2	0	8	20	14	62

AT PITTSBURGH				AT DETROIT			
Dec. 4 - Det.	7	Pitt.	2	Jan. 5 - Det.	2	Pitt.	1
Dec. 25 - Pitt.	6	Det.	3	Jan. 16 - Det.	3	Pitt.	2
Feb. 22 - Pitt.	3	Det.	2	Feb. 20 - Det.	3	Pitt.	0

TOTALS VS. DETROIT	GP	W	L	T	PTS.	GF	GA	PIM
(2 Seasons)	10	3	7	0	6	26	32	75

PITTSBURGH						DETROIT					
PLAYER	GP	G	A	TP	PIM	PLAYER	GP	G	A	TP	PIM
Andrea	3	2	0	2	0	Baun	6	1	3	4	8
Angotti	6	1	1	2	4	Bergman	6	1	1	2	8
Boivin	3	0	1	1	2	Connelly	2	0	0	0	0
Boyer	5	0	3	3	0	Delvecchio	6	1	4	5	0
Burns	6	1	3	4	5	Douglas	3	0	1	1	0
Dea	6	0	0	0	0	R. Harris	6	0	0	0	2
Fonteyne	6	1	1	2	0	Hatoum	1	0	1	1	0
B. Harris	6	1	0	1	0	Howe	6	6	0	6	6
Ingarfield	1	0	1	1	0	Lawson	4	1	1	2	2
Lagace	2	0	0	0	6	Leclerc	3	0	0	0	0
McCallum	4	0	1	1	2	Libett	6	2	3	5	4
McCreary	5	4	3	7	2	MacGregor	6	3	1	4	2
Mattiussi	2	0	0	0	0	F. Mahovlich	6	1	3	4	2
Price	6	0	1	1	2	P. Mahovlich	2	0	0	0	2
Pronovost	6	1	4	5	2	Monteith	3	0	1	1	0
Rupp	2	0	0	0	0	Popiel	6	1	3	4	6
Schinkel	6	1	1	2	2	Prentice	6	1	1	2	2
Speer	5	1	1	2	4	Stemkowski	6	1	3	4	10
Swarbrick	1	0	0	0	0	Unger	6	1	2	3	6
Ubriaco	4	0	1	1	0	Watson	1	0	0	0	2
Watson	2	0	0	0	0	Totals	6	20	28	48	62
Woytowich	6	1	3	4	8						
Totals	6	14	25	39	39						

GOALIES	GP	MP	GA	SO	GAPG
Binkley	4	240	15	0	3.75
Daley	1	60	2	0	2.00
M. Edwards	1	60	3	0	3.00
Totals	6	360	20	0	3.33

GOALIES	GP	MP	GA	SO	GAPG
Crozier	3	128	8	0	2.67
R. Edwards	3	172	3	0	1.00
Sawchuck	1	60	3	0	3.00
Totals	6	360	14	0	2.33

### PITTSBURGH VS. LOS ANGELES

1968-69	GP	W	L	T	PTS.	GF	GA	PIM
Pittsburgh	8	2	5	1	5	20	24	56
Los Angeles	8	5	2	1	11	24	20	64

AT PITTSBURGH				AT LOS ANGELES			
Nov. 23 - Pitt.	2	L.A.	2	Nov. 2 - L.A.	3	Pitt.	2
Dec. 14 - L.A.	2	Pitt.	1	Nov. 30 - Pitt.	4	L.A.	2
Feb. 8 - L.A.	4	Pitt.	2	Jan. 18 - L.A.	4	Pitt.	0
Mar. 26 - Pitt.	8	L.A.	4	Mar. 15 - L.A.	3	Pitt.	1

TOTALS VS. LOS ANGELES	GP	W	L	T	PTS.	GF	GA	PIM
(2 Seasons)	18	6	11	1	13	46	57	136

PITTSBURGH						LOS ANGELES					
PLAYER	GP	G	A	TP	PIM	PLAYER	GP	G	A	TP	PIM
Andrea	3	0	1	1	0	Amadio	6	0	0	0	4
Angotti	7	2	2	4	0	Anderson	7	0	1	1	4
Arbour	1	0	0	0	0	Cahan	7	0	0	0	10
Barrie	1	1	0	1	0	Campbell	1	0	0	0	0
Boivin	5	0	1	1	2	Croteau	1	2	1	3	2
Boyer	6	2	0	2	0	Dufour	1	0	0	0	0
Burns	8	2	7	9	0	Flett	7	4	3	7	6
Dea	6	1	2	3	0	B. Hughes	8	0	1	1	8
Dillabough	1	0	0	0	0	H. Hughes	7	2	2	4	2
Fonteyne	8	1	0	1	0	Inglis	2	0	0	0	0
Harris	6	0	1	1	0	Irvine	8	0	4	4	4
Ingarfield	5	1	1	2	2	Joyal	8	4	4	8	2
Lagace	2	0	1	1	2	Krake	4	1	3	4	0
Lecaine	1	0	0	0	0	Labossiere	4	1	1	2	0
McCallum	8	0	2	2	14	Lemieux	8	1	6	7	6
McCreary	7	3	3	6	4	MacDonald	6	2	1	3	0
Mattiussi	1	0	0	0	2	Menard	6	1	1	2	4
Pratt	3	0	2	2	0	Peters	8	2	1	3	0
Price	7	0	0	0	6	Robinson	4	0	1	1	2
Pronovost	8	2	2	4	6	Rolfe	8	1	1	2	4
Rupp	3	1	1	2	0	Wall	7	2	0	2	2
Schinkel	8	2	4	6	0	White	8	1	2	3	4
Snell	1	1	1	2	2	Totals	8	24	33	57	64
Speer	4	0	0	0	0						
Swain	1	0	0	0	0						
Swarbrick	2	0	0	0	2						
Ubriaco	5	0	0	0	2						
Watson	2	0	0	0	4						
Woytowich	8	1	0	1	6						
Totals	8	20	31	51	56						

GOALIES	GP	MP	GA	SO	GAPG
Dejardins	6	360	11	1	1.83
Rutledge	2	120	9	0	4.50
Totals	8	480	20	1	2.50

GOALIES	GP	MP	GA	SO	GAPG
Binkley	6	340	17(1)	0	2.83
Daley	3	140	6	0	1.50
Totals	8	480	23(1)	0	2.88

## PITTSBURGH VS. MINNESOTA

1968-69	GP	W	L	T	PTS.	GF	GA	PIM
Pittsburgh	8	5	3	0	10	25	15	74
Minnesota	8	3	5	0	6	15	25	80

### AT PITTSBURGH

Dec. 21 — Minn.	3	Pitt.	1
Jan. 9 — Pitt.	7	Minn.	2
Jan. 23 — Minn.	3	Pitt.	1
Mar. 23 — Pitt.	5	Minn.	0

### AT MINNESOTA

Dec. 11 — Pitt.	4	Minn.	2
Jan. 15 — Pitt.	3	Minn.	1
Feb. 19 — Minn.	3	Pitt.	1
Mar. 25 — Pitt.	3	Minn.	1

### TOTAL VS. MINNESOTA (2 Seasons)

GP	W	L	T	PTS.	GF	GA	PIM
18	9	6	3	21	58	44	155

### PITTSBURGH

PLAYER	GP	G	A	TP	PIM
Andrea	3	0	0	0	0
Angotti	8	1	2	3	6
Arbour	1	0	0	0	2
Boivin	4	1	1	2	4
Boyer	6	2	1	3	4
Burns	8	2	4	6	2
Dea	6	1	1	2	0
Fonteyne	8	2	3	5	0
Harris	8	2	5	7	0
Ingarfield	5	2	2	4	0
Lagace	2	0	0	0	2
McCallum	8	0	1	1	10
McCreary	6	4	1	5	6
Mattiussi	3	0	2	2	2
Pratt	3	0	1	1	4
Price	8	0	2	2	16
Pronovost	8	3	2	5	0
Rupp	3	0	1	1	4
Schinkel	8	2	4	6	0
Snell	1	1	0	1	2
Speer	3	0	1	1	0
Swain	2	0	0	0	0
Swarbrick	2	0	0	0	6
Ubricco	5	1	2	3	0
Watson	1	0	0	0	0
Woytowich	8	1	5	6	2
<b>Totals</b>	<b>8</b>	<b>25</b>	<b>41</b>	<b>66</b>	<b>74</b>

### MINNESOTA

PLAYER	GP	G	A	TP	PIM
Boivin	3	0	0	0	0
Boudria	6	2	1	3	0
Collins	8	0	2	2	2
Connelly	6	2	1	3	0
Cullen	7	1	1	2	6
Goldsworthy	6	1	1	2	14
Grant	8	2	3	5	8
Hillman	6	0	0	0	0
Johnson	3	0	0	0	6
Larose	7	2	4	6	12
Lawson	2	0	0	0	2
MacDonald	4	0	2	2	0
McCord	7	0	2	2	6
McKechnie	6	0	2	2	2
McMahon	5	0	0	0	0
Marcetta	1	0	0	0	0
Meissner	2	0	0	0	0
Nanne	6	1	0	1	4
Orban	2	0	0	0	0
O'Shea	8	3	2	5	8
Parise	8	1	1	2	6
Reid	2	0	0	0	0
Rupp	3	0	0	0	4
Smith	1	0	0	0	0
Vasko	7	0	0	0	0
<b>Totals</b>	<b>8</b>	<b>15</b>	<b>22</b>	<b>37</b>	<b>80</b>

### GOALIES

GP	MP	GA	SO	GAPG	
Binkley	5	300	12	0	2.40
Daley	3	180	3	1	1.00
<b>Totals</b>	<b>8</b>	<b>480</b>	<b>15</b>	<b>1</b>	<b>1.88</b>

### GOALIES

GP	MP	GA	SO	GAPG	
Maniago	6	360	19	0	3.17
Rivard	2	120	8	1	4.00
<b>Totals</b>	<b>8</b>	<b>480</b>	<b>27</b>	<b>1</b>	<b>3.38</b>

## PITTSBURGH VS. MONTREAL

1968-69	GP	W	L	T	PTS.	GF	GA	PIM
Pittsburgh	6	1	4	1	3	16	21	42
Montreal	6	4	1	1	9	21	16	54

### AT PITTSBURGH

Oct. 12 — Pitt.	1	Mont.	1
Dec. 31 — Mont.	4	Pitt.	3
Feb. 16 — Mont.	4	Pitt.	0

### AT MONTREAL

Nov. 7 — Mont.	5	Pitt.	4
Jan. 2 — Pitt.	5	Mont.	2
Mar. 20 — Mont.	5	Pitt.	3

### TOTAL VS. MONTREAL (2 Seasons)

GP	W	L	T	PTS.	GF	GA	PIM
10	1	8	1	3	27	37	66

### PITTSBURGH

PLAYER	GP	G	A	TP	PIM
Andrea	1	0	0	0	0
Angotti	5	1	2	3	2
Arbour	2	0	1	1	4
Barrie	1	0	0	0	0
Boivin	2	0	0	0	2
Boyer	5	2	1	3	0
Burns	6	1	2	3	2
Dea	6	2	2	4	0
Dillabough	2	0	0	0	0
Fonteyne	6	0	1	1	0
B. Harris	4	2	1	3	2
Ingarfield	3	0	1	1	0
Lagace	2	0	0	0	0
McCallum	4	0	1	1	2
McCreary	5	1	4	5	2
Mattiussi	2	0	0	0	2
Pratt	2	0	0	0	4
Price	6	0	1	1	8
Pronovost	6	1	4	5	0
Rupp	2	0	0	0	0
Schinkel	6	1	4	5	0
Speer	2	0	0	0	0
Swain	1	0	0	0	0
Swarbrick	2	0	2	2	2
Ubricco	4	3	0	3	2
Watson	1	0	0	0	0
Woytowich	6	2	2	4	8
<b>Totals</b>	<b>6</b>	<b>16</b>	<b>29</b>	<b>45</b>	<b>42</b>

### MONTREAL

PLAYER	GP	G	A	TP	PIM
Backstrom	6	2	1	3	4
Beliveau	5	1	4	5	0
Bordeleau	2	0	0	0	0
Cournoyer	6	1	5	6	4
Drouin	2	0	0	0	0
Duff	6	2	2	4	4
Ferguson	6	2	2	4	4
Glover	1	0	0	0	0
Harper	2	0	1	1	4
T. Harris	6	0	3	3	6
Lemaire	6	2	4	6	0
Laperriere	6	1	0	1	14
Provost	4	1	0	1	2
Redmond	6	1	1	2	0
Richard	6	1	6	7	6
Rousseau	6	4	2	6	0
Savard	6	1	2	3	4
G. Tremblay	2	1	0	1	0
J. C. Tremblay	6	1	1	2	2
<b>Totals</b>	<b>6</b>	<b>21</b>	<b>34</b>	<b>55</b>	<b>54</b>

### GOALIES

GP	MP	GA	SO	GAPG	
Vachon	4	240	15	0	3.75
Worsley	2	120	1	1	.50
<b>Totals</b>	<b>6</b>	<b>360</b>	<b>16</b>	<b>1</b>	<b>2.67</b>

### GOALIES

GP	MP	GA	SO	GAPG	
Binkley	5	300	16	0	3.20
Daley	1	60	5	0	5.00
<b>Totals</b>	<b>6</b>	<b>360</b>	<b>21</b>	<b>0</b>	<b>3.50</b>

## PITTSBURGH VS. NEW YORK

1968-69	GP	W	L	T	PTS.	GF	GA	PIM
Pittsburgh	6	1	5	0	2	16	27	75
New York	6	5	1	0	10	27	16	103

### AT PITTSBURGH

Nov. 16 - N.Y.	2	Pitt.	1	Oct. 30 - N.Y.	7	Pitt.	3
Feb. 5 - Pitt.	3	N.Y.	2	Feb. 2 - N.Y.	7	Pitt.	3
Mar. 8 - N.Y.	5	Pitt.	3	Mar. 12 - N.Y.	4	Pitt.	3

### AT NEW YORK

Nov. 16 - N.Y.	2	Pitt.	1	Oct. 30 - N.Y.	7	Pitt.	3
Feb. 5 - Pitt.	3	N.Y.	2	Feb. 2 - N.Y.	7	Pitt.	3
Mar. 8 - N.Y.	5	Pitt.	3	Mar. 12 - N.Y.	4	Pitt.	3

### TOTALS VS. NEW YORK (2 Seasons)

GP	W	L	T	PTS.	GF	GA	PIM
10	1	8	1	3	23	42	109

### PITTSBURGH

PLAYER	GP	G	A	TP	PIM
Andrea	2	1	1	2	0
Angotti	6	1	1	2	0
Arbour	2	0	0	0	8
Barrie	1	0	0	0	2
Boivin	2	0	0	0	0
Boyer	5	0	3	3	4
Burns	6	1	2	3	2
Dea	6	0	0	0	0
Dillabough	2	0	0	0	0
Fonteyne	5	1	5	6	0
Harris	4	0	2	2	2
Ingarfield	2	1	1	2	0
Lagace	1	0	0	0	0
Lecaine	1	0	0	0	0
McCallum	5	1	0	1	14
McCreary	6	1	1	2	2
Pratt	2	0	0	0	7
Price	5	1	0	1	5
Pronovost	6	3	3	6	6
Rupp	4	0	3	3	6
Schinkel	6	5	2	7	0
Speer	2	0	1	1	0
Swarbrick	1	0	0	0	4
Ubriaco	2	0	1	1	0
Watson	4	0	1	1	13
Woytowich	5	0	1	1	0
<b>Totals</b>	<b>6</b>	<b>16</b>	<b>28</b>	<b>44</b>	<b>75</b>

GOALIES	GP	MP	GA	SO	GAPG
Binkley	4	240	18	0	4.50
Daley	2	120	9	0	4.50
<b>Totals</b>	<b>6</b>	<b>360</b>	<b>27</b>	<b>0</b>	<b>4.50</b>

### NEW YORK

PLAYER	GP	G	A	TP	PIM
Balon	6	1	2	3	10
Blackburn	2	0	0	0	0
Brown	6	1	0	1	10
Gilbert	6	4	8	12	2
Fleming	6	0	1	1	16
Goyette	5	0	5	5	2
Hadfield	6	4	4	8	10
Hamilton	2	0	0	0	0
Hextall	1	0	0	0	2
Hawell	4	0	0	0	2
Jeffrey	6	0	0	0	0
Marshall	6	2	2	4	2
Neilson	6	0	3	3	29
Nevin	6	7	1	8	4
Park	4	1	5	6	4
Ratelle	6	5	5	10	2
Seiling	6	0	2	2	8
Stewart	6	2	0	2	0
Tkaczuk	6	0	4	4	0
<b>Totals</b>	<b>6</b>	<b>27</b>	<b>42</b>	<b>69</b>	<b>103</b>

GOALIES	GP	MP	GA	SO	GAPG
Giacomin	6	360	16	0	2.67

## PITTSBURGH VS. OAKLAND

1968-69	GP	W	L	T	PTS.	GF	GA	PIM
Pittsburgh	8	2	4	2	6	24	31	71
Oakland	8	4	2	2	10	31	24	83

### AT PITTSBURGH

Nov. 21 - Pitt.	3	Oak.	1	Nov. 3 - Pitt.	3	Oak.	1
Dec. 28 - Oak.	4	Pitt.	3	Dec. 1 - Pitt.	4	Oak.	4
Jan. 11 - Oak.	4	Pitt.	2	Jan. 19 - Oak.	6	Pitt.	3
Feb. 15 - Pitt.	4	Oak.	4	Mar. 16 - Oak.	7	Pitt.	2

### AT OAKLAND

Nov. 21 - Pitt.	3	Oak.	1	Nov. 3 - Pitt.	3	Oak.	1
Dec. 28 - Oak.	4	Pitt.	3	Dec. 1 - Pitt.	4	Oak.	4
Jan. 11 - Oak.	4	Pitt.	2	Jan. 19 - Oak.	6	Pitt.	3
Feb. 15 - Pitt.	4	Oak.	4	Mar. 16 - Oak.	7	Pitt.	2

### TOTALS VS. OAKLAND (2 Seasons)

GP	W	L	T	PTS.	GF	GA	PIM
18	7	5	6	20	56	50	147

### PITTSBURGH

PLAYER	GP	G	A	TP	PIM
Andrea	2	2	0	2	0
Angotti	7	2	4	6	4
Arbour	1	0	0	0	0
Boivin	6	3	3	6	8
Boyer	7	0	3	3	5
Burns	8	2	5	7	5
Daley	5	0	0	0	2
Dea	7	1	1	2	0
Dillabough	1	0	0	0	0
Fonteyne	8	1	2	3	2
Harris	5	0	1	1	0
Ingarfield	5	0	1	1	0
Lagace	3	0	0	0	0
Lecaine	1	0	0	0	0
McCallum	5	1	1	2	6
McCreary	7	0	1	1	2
Mattiussi	2	0	0	0	4
Pratt	2	0	0	0	2
Price	8	1	3	4	4
Pronovost	8	2	1	3	0
Rupp	2	1	1	2	2
Schinkel	8	1	4	5	0
Speer	3	0	0	0	6
Swarbrick	2	0	2	2	4
Ubriaco	6	5	5	10	2
Watson	1	0	1	1	0
Woytowich	8	2	2	4	13
<b>Totals</b>	<b>8</b>	<b>24</b>	<b>41</b>	<b>65</b>	<b>71</b>

### OAKLAND

PLAYER	GP	G	A	TP	PIM
Brenneman	2	0	0	0	0
Dillabough	5	2	3	5	0
Ehman	7	0	1	1	0
Ferguson	8	6	5	11	6
Hampson	8	1	6	7	0
Harris	2	0	0	0	0
Hicke	7	3	5	8	4
Ingarfield	2	2	1	3	0
Jarrett	7	3	3	6	0
Lacomb	8	0	2	2	6
Laughton	6	5	4	9	6
Marshall	8	0	1	1	4
Mattiussi	2	0	0	0	2
Odrowski	8	1	0	1	4
Perry	6	2	5	7	0
Roberts	8	0	3	3	4
Swarbrick	6	0	2	2	10
Szura	6	2	2	4	2
Ubriaco	2	2	0	2	0
Vadnais	8	2	3	5	26
Watson	6	0	0	0	9
<b>Totals</b>	<b>8</b>	<b>31</b>	<b>46</b>	<b>77</b>	<b>83</b>

GOALIES	GP	MP	GA	SO	GAPG
Hodge	3	180	8	0	2.67
Smith	3	180	9	0	3.00
Worthy	2	120	7	0	3.50
<b>Totals</b>	<b>8</b>	<b>480</b>	<b>24</b>	<b>0</b>	<b>3.00</b>

GOALIES	GP	MP	GA	SO	GAPG
Binkley	4	220	12	0	3.00
Daley	5	260	18(1)	0	3.60
<b>Totals</b>	<b>8</b>	<b>480</b>	<b>30(1)</b>	<b>0</b>	<b>3.75</b>

### PITTSBURGH VS. PHILADELPHIA

1968-69	GP	W	L	T	PTS.	GF	GA	PIM
Pittsburgh	8	1	4	3	5	13	26	93
Philadelphia	8	4	1	3	11	26	13	135

AT PITTSBURGH				AT PHILADELPHIA			
Nov. 9 — Phila.	3	Pitt.	0	Oct. 17 — Phila.	3	Pitt.	0
Jan. 4 — Pitt.	1	Phila.	1	Dec. 17 — Phila.	8	Pitt.	2
Feb. 1 — Pitt.	2	Phila.	2	Jan. 26 — Phila.	5	Pitt.	3
Mar. 30 — Pitt.	2	Phila.	1	Mar. 29 — Pitt.	3	Phila.	3

TOTAL VS. PHILADELPHIA	GP	W	L	T	PTS.	GF	GA	PIM
(2 Seasons)	18	5	7	6	16	33	38	198

PITTSBURGH						PHILADELPHIA					
PLAYER	GP	G	A	TP	PIM	PLAYER	GP	G	A	TP	PIM
Andrea	2	0	1	1	0	Blackburn	4	1	0	1	4
Angotti	8	1	2	3	6	Byers	2	0	2	2	0
Arbour	2	0	0	0	4	Cherry	8	2	1	3	4
Barrie	2	0	0	0	4	Dornhofer	5	0	2	2	8
Boivin	2	0	0	0	2	Gendron	8	1	6	7	17
Boyer	6	1	1	2	2	Hall	7	0	3	3	4
Burns	8	0	4	4	2	Heiskala	2	1	0	1	0
Dea	5	1	1	2	0	Johnson	6	1	2	3	0
Dillabough	2	0	0	0	0	Kennedy	6	3	0	3	36
Fonteyne	7	0	0	0	0	Lacroix	8	4	3	7	0
Harris	6	0	1	1	0	MacSewyn	4	0	0	0	0
Ingarfield	3	0	0	0	0	Meehan	2	0	0	0	0
Lagace	2	0	0	0	0	Miszuk	8	0	1	1	6
McCallum	8	1	2	3	17	Nolet	4	0	1	1	0
McCreary	8	2	3	5	6	Paiement	4	0	3	3	2
Mattiussi	1	0	0	0	4	Peters	6	2	0	2	10
Pratt	2	0	2	2	6	Rocheport	8	2	3	5	0
Price	8	0	2	2	4	Sarrazin	6	4	6	10	0
Pronovost	8	1	0	1	4	Selby	6	3	3	6	6
Rupp	4	1	0	1	4	Stankewicz	2	0	2	2	8
Schinkel	8	2	2	4	12	Stanley	6	0	3	3	0
Snell	2	1	0	1	2	Sutherland	2	2	0	2	2
Speer	2	0	0	0	2	VanImpe	6	0	0	0	26
Swain	2	1	1	2	0	Watson	7	0	0	0	2
Swarbrick	3	1	2	3	4	Totals	8	26	41	67	135
Ubriaco	5	0	1	1	2						
Watson	1	0	0	0	4						
Woytowich	6	0	0	0	2						
Totals	8	13	25	38	93						

GOALIES	GP	MP	GA	SO	GAPG
Binkley	7	392	23	0	3.29
Daley	2	88	3	0	1.50
Totals	8	480	26	0	3.25

GOALIES	GP	MP	GA	SO	GAPG
Favell	4	240	5	1	1.25
Parent	4	240	7	1	1.75
Totals	8	480	12	2	1.50

### PITTSBURGH VS. ST. LOUIS

1968-69	GP	W	L	T	PTS.	GF	GA	PIM
Pittsburgh	8	3	4	1	7	15	16	77
St. Louis	8	4	3	1	9	16	15	91

AT PITTSBURGH				AT ST. LOUIS			
Oct. 26 — Pitt.	4	St. L.	2	Dec. 7 — Pitt.	1	St. L.	1
Nov. 6 — St. L.	3	Pitt.	1	Dec. 26 — St. L.	3	Pitt.	2
Jan. 29 — St. L.	2	Pitt.	1	Feb. 12 — St. L.	2	Pitt.	0
Mar. 5 — Pitt.	4	St. L.	2	Mar. 22 — Pitt.	2	St. L.	1

PITTSBURGH VS. ST. LOUIS	GP	W	L	T	PTS.	GF	GA	PIM
(2 Seasons)	18	7	10	1	15	40	49	162

PITTSBURGH						ST. LOUIS					
PLAYER	GP	G	A	TP	PIM	PLAYER	GP	G	A	TP	PIM
Andrea	2	1	0	1	0	A. Arbour	7	0	0	0	2
Angotti	7	2	2	4	6	Berenson	8	2	6	8	2
Arbour	2	0	1	1	0	Cameron	8	0	0	0	0
Barrie	1	0	1	1	0	Crisp	6	0	0	0	4
Boivin	4	0	2	2	0	Ecclestone	7	0	2	2	2
Boyer	7	0	0	0	2	Fortin	1	0	0	0	0
Burns	8	0	2	2	2	Gray	1	0	0	0	0
Dea	8	1	0	1	4	Harvey	8	0	1	1	6
Dillabough	2	0	0	0	0	Henry	7	3	2	5	0
Fonteyne	8	2	2	4	0	Keenan	4	0	1	1	0
Harris	6	1	1	2	2	B. McCreary	8	2	0	2	18
Ingarfield	4	2	0	2	2	McDonald	8	2	2	4	0
Lagace	1	0	0	0	0	Picard	7	1	1	2	10
McCallum	6	0	1	1	10	Bob Plager	4	0	0	0	2
McCreary	8	2	2	4	4	Barclay Plager	6	0	1	1	22
Pratt	3	0	0	0	2	Roberts	7	1	2	3	0
Price	8	0	2	2	6	Sabourin	8	2	1	3	8
Pronovost	8	0	1	1	4	St. Marseille	7	1	1	2	4
Rupp	4	0	3	3	6	Schock	7	1	2	3	0
Schinkel	8	1	5	6	0	Stankewicz	2	0	0	0	5
Speer	2	0	0	0	2	Talbot	7	1	1	2	6
Swain	1	0	0	0	0	Totals	8	16	23	39	91
Swarbrick	2	0	0	0	2						
Ubriaco	5	2	0	2	2						
Watson	2	0	0	0	12						
Woytowich	8	1	1	2	9						
Totals	8	15	26	41	77						

GOALIES	GP	MP	GA	SO	GAPG
Hall	2	120	1	1	0.50
Ouiment	1	60	2	0	2.00
Plante	5	300	12	0	2.40
Totals	8	480	15	1	1.88

GOALIES	GP	MP	GA	SO	GAPG
Binkley	5	300	11	0	2.20
Daley	3	180	5	0	1.67
Totals	8	480	16	0	2.00



## PITTSBURGH VS. TORONTO

1968-69	GP	W	L	T	PTS.	GF	GA	PIM
Pittsburgh	6	0	3	3	3	11	19	48
Toronto	6	3	0	3	9	19	11	73

### AT PITTSBURGH

Nov. 27 — Tor.	3	Pitt.	3
Dec. 8 — Tor.	4	Pitt.	1
Jan. 25 — Tor.	2	Pitt.	0

### AT TORONTO

Oct. 16 — Pitt.	2	Tor.	2
Nov. 20 — Tor.	5	Pitt.	2
Mar. 1 — Pitt.	3	Tor.	3

PITTSBURGH VS. TORONTO (2 Seasons)	GP	W	L	T	PTS.	GF	GA	PIM
	10	2	5	3	7	19	33	70

### PITTSBURGH

PLAYER	GP	G	A	TP	PIM
Andrea	1	1	1	2	0
Angotti	6	0	2	2	2
Arbour	2	0	0	0	9
Boivin	4	1	2	3	0
Boyer	5	1	3	4	0
Burns	6	1	1	2	0
Dea	6	2	0	2	0
Fonteyne	6	0	1	1	0
Harris	3	0	1	1	0
Ingarfield	4	0	2	2	0
Lagace	1	0	0	0	4
Lecaine	1	0	0	0	0
McCallum	5	0	1	1	2
McCreary	6	1	1	2	7
Price	6	0	1	1	4
Pronovost	6	1	2	3	2
Rupp	2	0	0	0	2
Schinkel	6	1	1	2	2
Speer	4	0	0	0	4
Swain	1	0	0	0	0
Swarbrick	1	0	0	0	2
Ubrisco	5	2	0	2	0
Watson	1	0	0	0	2
Woytowich	5	0	2	2	6
<b>Totals</b>	<b>6</b>	<b>11</b>	<b>21</b>	<b>32</b>	<b>48</b>

### TORONTO

PLAYER	GP	G	A	TP	PIM
Armstrong	3	3	0	3	0
Byers	1	0	0	0	0
Carleton	3	0	1	1	0
Dorey	5	0	2	2	36
Ellis	5	1	5	6	0
Henderson	5	1	1	2	2
Horton	6	1	5	6	8
Keon	6	4	3	7	0
Ley	3	0	0	0	0
McKenny	2	0	0	0	2
Meehan	2	0	1	1	0
Mickey	6	1	1	2	6
Oliver	6	1	4	5	0
Pelyk	5	0	1	1	0
Pilote	4	3	1	4	2
M. Pronovost	3	0	0	0	2
Pulford	4	1	4	5	0
Quinn	3	0	0	0	6
Smith	6	1	1	2	7
Sutherland	5	0	1	1	0
Ullman	6	0	4	4	2
Walton	6	2	0	2	0
<b>Totals</b>	<b>6</b>	<b>19</b>	<b>35</b>	<b>54</b>	<b>73</b>

### GOALIES

GOALIES	GP	MP	GA	SO	GAPG
Binkley	5	253	11	0	2.61
Daley	2	107	7 <sup>(1)</sup>	0	3.93
<b>Totals</b>	<b>6</b>	<b>360</b>	<b>18<sup>(1)</sup></b>	<b>0</b>	<b>3.00</b>

GOALIES	GP	MP	GA	SO	GAPG
Bower	2	108	2	0	1.11
Gamble	4	192	7	1	1.56
Smith	1	60	2	0	2.00
<b>Totals</b>	<b>6</b>	<b>360</b>	<b>11</b>	<b>1</b>	<b>1.83</b>

## NHL STARTING TIMES (ALL TIMES ARE LOCAL)

Week Nights	<b>BOSTON</b>	8:00 P.M.
Sundays and Holidays		7:30 P.M.
All Games	<b>CHICAGO</b>	7:30 P.M.
Week Nights	<b>DETROIT</b>	8:00 P.M.
Sundays		7:00 P.M.
Matinees		2:00 P.M.
All Games	<b>LOS ANGELES</b>	8:00 P.M.
Week Nights	<b>MINNESOTA</b>	8:00 P.M.
Dec. 25		7:00 P.M.
Matinees		1:30 P.M.
All Games	<b>MONTREAL</b>	8:00 P.M.
Week Nights	<b>NEW YORK</b>	7:30 P.M.
Sundays		7:00 P.M.
March 8 and 15		8:30 P.M.
Matinees		1:30 P.M.
Night Games	<b>OAKLAND</b>	8:00 P.M.
Matinees		2:00 P.M.
Week Nights	<b>PHILADELPHIA</b>	8:00 P.M.
Sundays		7:00 P.M.
Jan. 25		2:00 P.M.
Feb. 7, Apr. 4		1:30 P.M.
Week Nights	<b>PITTSBURGH</b>	8:00 P.M.
Sundays		7:00 P.M.
Matinees		2:30 P.M.
All Games	<b>ST. LOUIS</b>	8:00 P.M.
All Games	<b>TORONTO</b>	8:00 P.M.

NOTES:

NHL PUBLICITY CONTACTS

**Boston Bruins**

Herb Ralby  
450 Causeway St.  
Boston, Mass. 02114  
Business Phone: 277-3200 (617)  
Home Phone: 698-2072 (617)

**Chicago Black Hawks**

Don Murphy  
1800 W. Madison St.  
Chicago, Ill. 60612  
Business Phone: 733-5300 (312)  
Home Phone: 864-3981 (312)

**Detroit Red Wings**

Ron Cantera  
5920 Grand River  
Detroit, Mich. 48208  
Business Phone: 895-3733 (313)  
Home Phone: 562-7447 (313)

**Los Angeles Kings**

Jon Washington  
Box 10  
Inglewood, Cal. 90307  
Business Phone: 674-6000 (213)  
Home Phone: 671-1574 (213)

**Minnesota North Stars**

Dick Dillman  
Metropolitan Sports Center  
Bloomington, Minn. 55420  
Business Phone: 884-4010 (612)  
Home Phone: 429-3564 (612)

**Montreal Canadiens**

Roland Ricard  
2313 St. Catherine St. W.  
Montreal, Canada  
Business Phone: 932-6131 (514)

**New York Rangers**

John Halligan  
Four Pennsylvania Plaza  
New York, N.Y. 10001  
Business Phone: 594-6600 (212)  
Home Phone: 791-3768 (201)

**NHL-Montreal**

Ron Andrews  
922 Sun Life Bldg.  
Montreal, Canada  
Business Phone: 866-3755 (514)  
Home Phone: 684-7870 (514)

**NHL-New York**

Don V. Ruck  
Suite 2480, Two Pennsylvania Plaza  
New York, N.Y. 10001  
Business Phone: 695-3600 (212)  
Home Phone: 288-2860 (203)

**Oakland Seals**

Bob Bestor  
303 Hegenberger Rd.  
Oakland, Cal. 94621  
Business Phone: 635-2500 (415)  
Home Phone: 537-1685 (415)

**Philadelphia Flyers**

Joe Kadlec  
The Spectrum, Pattison Place  
Philadelphia, Pa. 19148  
Business Phone: 465-4500 (215)  
Home Phone: 288-9505 (215)

**Pittsburgh Penguins**

Jack Button  
Civic Arena  
Pittsburgh, Pa. 15219  
Business Phone: 261-4010 (412)  
Home Phone: 221-2333 (412)

**St. Louis Blues**

Wayne Cooper  
5700 Oakland Ave.  
St. Louis, Mo. 63110  
Business Phone: 644-0900 (314)  
Home Phone: 832-5828 (314)

**Toronto Maple Leafs**

Howard Starkman  
60 Carlton St.  
Toronto, Canada  
Business Phone: 368-1641 (416)  
Home Phone: 633-7216 (416)

### GOALTENDERS

Player	Hgt.	Wgt.	Place of Birth	Date	Shoots	68-69 Club	GP	GA	SO	AVG.
◊ Binkley, Less	6'0"	175	Owen Sound, Ont.	6/6 /36	R	Pittsburgh	50	158	0	3.29
◊ Daley, Joe	5'10"	165	Winnipeg, Man.	2/20/43	L	Pittsburgh	29	87	2	3.23
◊ Hoganson, Paul	5'10"	165	Toronto, Ont.	11/12/49	R	Tor. (Jr.) Marlboro	21	84	0	3.84
◊ Smith, Allan	6'0"	195	Toronto, Ont.	11/10/45	L	Toronto	7	16	0	2.87
						Tulsa (CHL)	8	22	0	2.87
						Rochester (AHL)	34	114	2	3.45

### DEFENSEMEN

Player	Hgt.	Wgt.	Place of Birth	Date	Shoots	68-69 Club	GP	G	A	PTS	PIM
* Barrie, Doug	5'9"	175	Edmonton, Alta.	10/2 /46	R	Pittsburgh	8	1	1	2	8
◊ Blackburn, Bob	5'11"	180	Rouyn, Que.	2/1 /38	L	Amarillo (CHL)	66	7	29	36	163
◊ Labre, Yvon	5'11"	190	Sudbury, Ont.	11/29/49	L	New York	11	0	0	0	0
* Lagace, Jean Guy	5'8"	175	L'Abord-A-Plouffe, Que.	2/5 /45	R	Buffalo (AHL)	58	3	15	18	73
◊ Lanyon, Ted	5'10"	165	Winnipeg, Man.	6/11/39	L	Tor. (Jr.) Marlboro	54	1	17	17	185
◊ Morrison, Jim	5'10"	180	Montreal, Que.	10/11/31	L	Amarillo (CHL)	49	9	19	28	96
◊ Pratt, Tracy	6'0"	185	New York, N.Y.	6/14/45	L	Pittsburgh	17	0	1	1	14
◊ Rupp, Duane	6'1"	195	Macnutt, Sask.	3/29/38	L	Amarillo (CHL)	58	6	26	32	168
◊ Simpson, David	5'8"	180	Sudbury, Ont.	3/13/48	L	Baltimore (AHL)	65	5	32	37	35
◊ Watson, Bryan	5'10"	170	Bancroft, Ont.	11/14/42	R	Vancouver (WHL)	45	2	10	12	74
◊ Woytowich, Bob	5'11"	195	Winnipeg, Man.	8/18/41	R	Pittsburgh	18	0	5	5	34
						Minnesota	29	2	1	3	8
						Cleveland (AHL)	13	3	6	9	38
						Pittsburgh	30	3	10	13	24
						Amarillo (CHL)	58	6	11	17	185
						Oakland	50	2	3	5	97
						Pittsburgh	18	0	4	4	35
						Pittsburgh	71	9	20	29	62

### CENTERS

◊ Boyer, Wally	5'8"	170	Cowan, Man.	9/27/37	L	Pittsburgh	62	10	19	29	17
◊ Briere, Michel	5'10"	165	Shawinigan Falls, Que.	10/21/49	L	Shawinigan Falls (Jrs.)					
◊ Cunningham, Robert	5'11"	170	Welland, Ont.	2/26/41	L	Denver (WHL)	17	8	5	13	0
						Baltimore (AHL)	46	5	12	17	22
◊ Hextall, Bryan	5'11"	180	Winnipeg, Man.	5/23/41	L	Pittsburgh	54	7	13	20	8
◊ Kessell, Rick	5'10"	175	Toronto, Ont.	7/27/49	L	Vancouver (WHL)	70	22	56	78	104
◊ Rivard, Bob	5'7"	155	Sherbrooke, Que.	8/1 /39	L	Oshawa (Jr.)	53	26	66	92	8
◊ Schock, Ron	5'10"	175	Chapleau, Ont.	12/19/43	L	Baltimore-Quebec (AHL)	73	20	37	57	40
						St. Louis	67	12	27	39	14

### RIGHT WINGS

◊ Bathgate, Andy	6'0"	180	Winnipeg, Man.	8/28/32	R	Vancouver (WHL)	71	37	36	73	44
◊ Cameron, Craig	6'0"	195	Edmonton, Alta.	7/19/45	R	St. Louis	72	11	5	16	40
◊ Harbaruk, Nick	6'0"	190	Poland	8/16/43	R	Vancouver (WHL)	3	1	1	2	2
* Hicks, Wayne	5'11"	190	Aberdeen, Wash.	4/9 /37	R	Tulsa (CHL)	69	26	19	45	89
◊ Patenaude, Edgar	5'8"	175	Williams Lake, B.C.	10/17/49	R	Baltimore (AHL)	65	33	36	69	55
◊ Pronovost, Jean	5'11"	180	Shawinigan Falls, Que.	12/18/45	L	Calgary (Jrs.)					
◊ Schinkel, Ken	5'10"	170	Jansen, Sask.	11/27/32	R	Pittsburgh	76	16	25	41	41
* Snell, Ronald	5'10"	160	Regina, Sask.	8/11/48	R	Pittsburgh	76	18	34	52	18
						Pittsburgh	4	3	1	4	6
* Swarbrick, George	5'10"	180	Moose Jaw, Sask.	2/16/42	R	Amarillo (CHL)	69	26	19	45	43
						Oakland	50	3	13	16	75
						Pittsburgh	19	1	6	7	28

### LEFT WINGS

◊ Billows, Larry	5'10"	180	Hampton, Sask.	4/3 /46	L	Amarillo (CHL)	72	31	28	59	87
◊ Dea, Billy	5'8"	175	Edmonton, Alta.	4/3 /33	L	Pittsburgh	66	10	8	18	4
◊ Fonteyne, Val	5'9"	155	Wetaskiwin, Alta.	12/2 /33	L	Pittsburgh	74	12	17	29	2
◊ McCreary, Keith	5'10"	175	Sundridge, Ont.	6/19/40	L	Pittsburgh	70	25	23	48	42
◊ Prentice, Dean	5'11"	180	Schumacher, Ont.	10/5 /32	L	Detroit	74	14	20	34	18
◊ Sather, Glen	5'11"	180	High River, Alta.	9/2 /43	L	Boston	76	4	1	15	67
◊ Swain, Gary	5'8"	165	Welland, Ont.	9/11/47	L	Pittsburgh	9	1	1	2	0
						Amarillo (CHL)	69	20	27	47	51

R - RETIRED  
 - DIDN'T MAKE IT  
 \* - CALLED UP SOMETIMES  
 - REGULAR

} for the "69-70" season